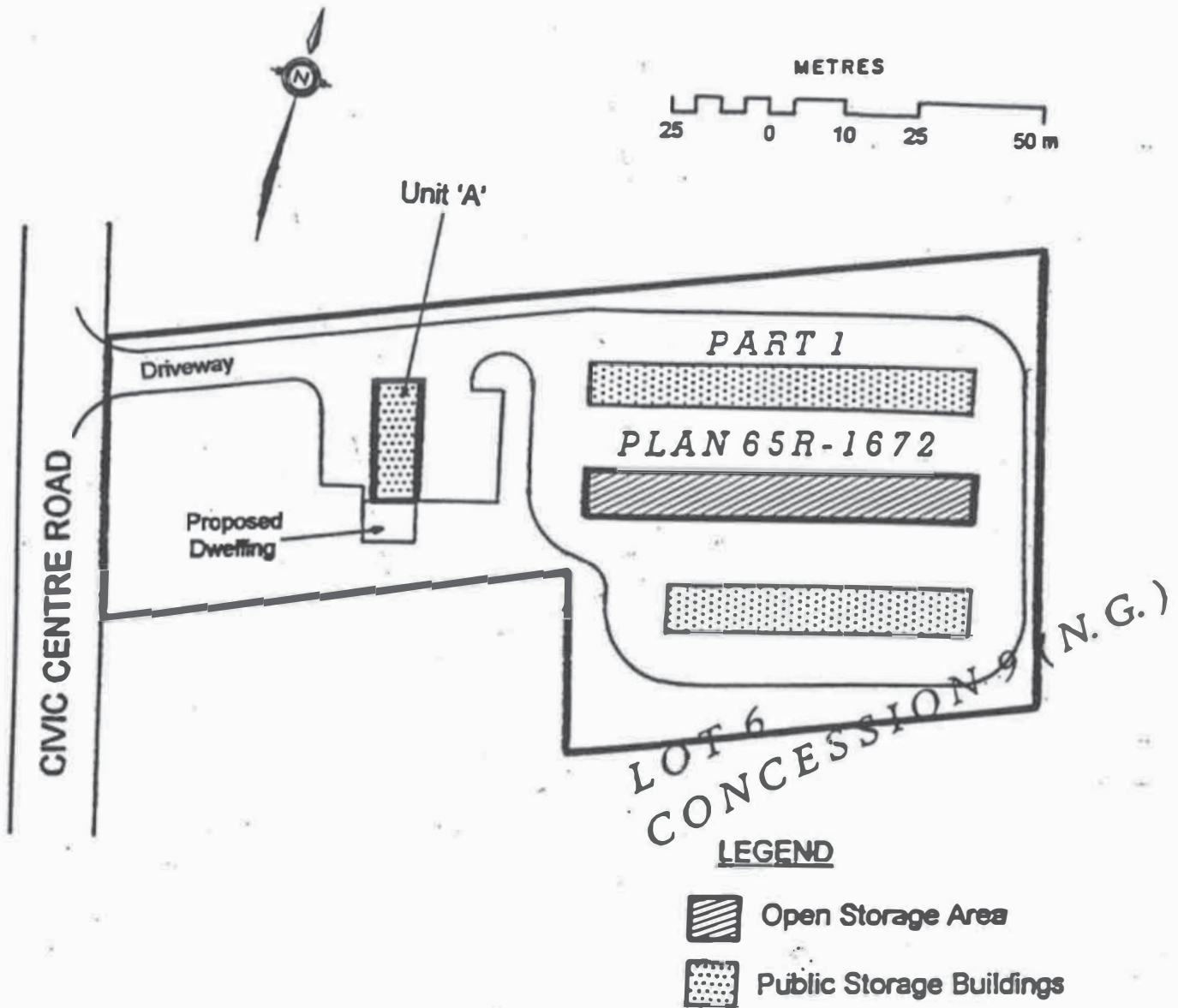


PART 1, PLAN 65R-1672
PART OF LOT 6, CONCESSION 9 (N.G.)
TOWN OF GEORGINA
THE REGIONAL MUNICIPALITY OF YORK

FORMERLY TOWNSHIP OF NORTH GWILLIMBURY
COUNTY OF YORK



SCHEDULE 'C-1'

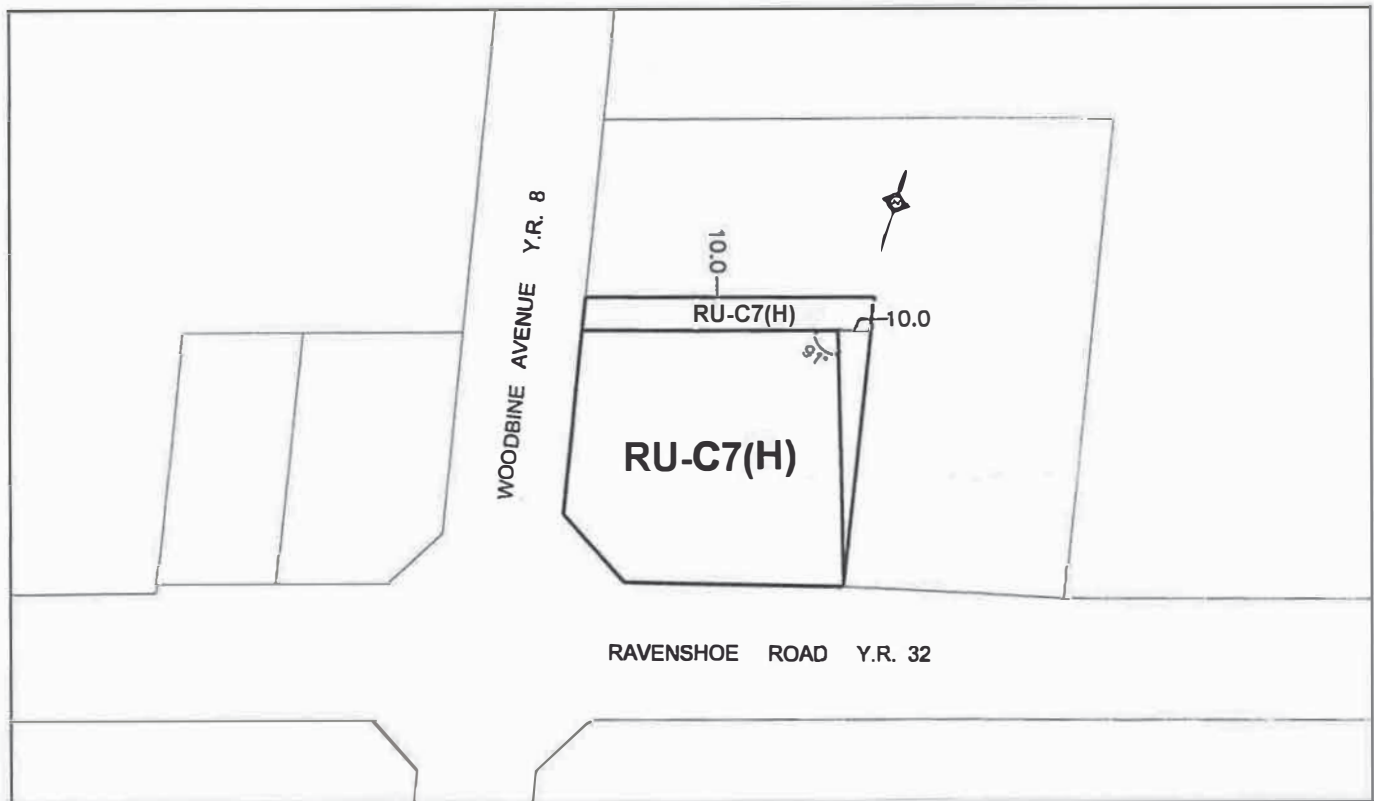
PART OF LOT 1, CONCESSION 4 (N.G.)
TOWN OF GEORGINA
THE REGIONAL MUNICIPALITY OF YORK

THIS IS SCHEDULE 'C' TO
BYLAW 500-2010-0009
PASSED THIS 19th DAY OF
July, 2010


CLERK


MAYOR

FORMERLY IN THE TOWNSHIP OF NORTH GWILLIMBURY
COUNTY OF YORK

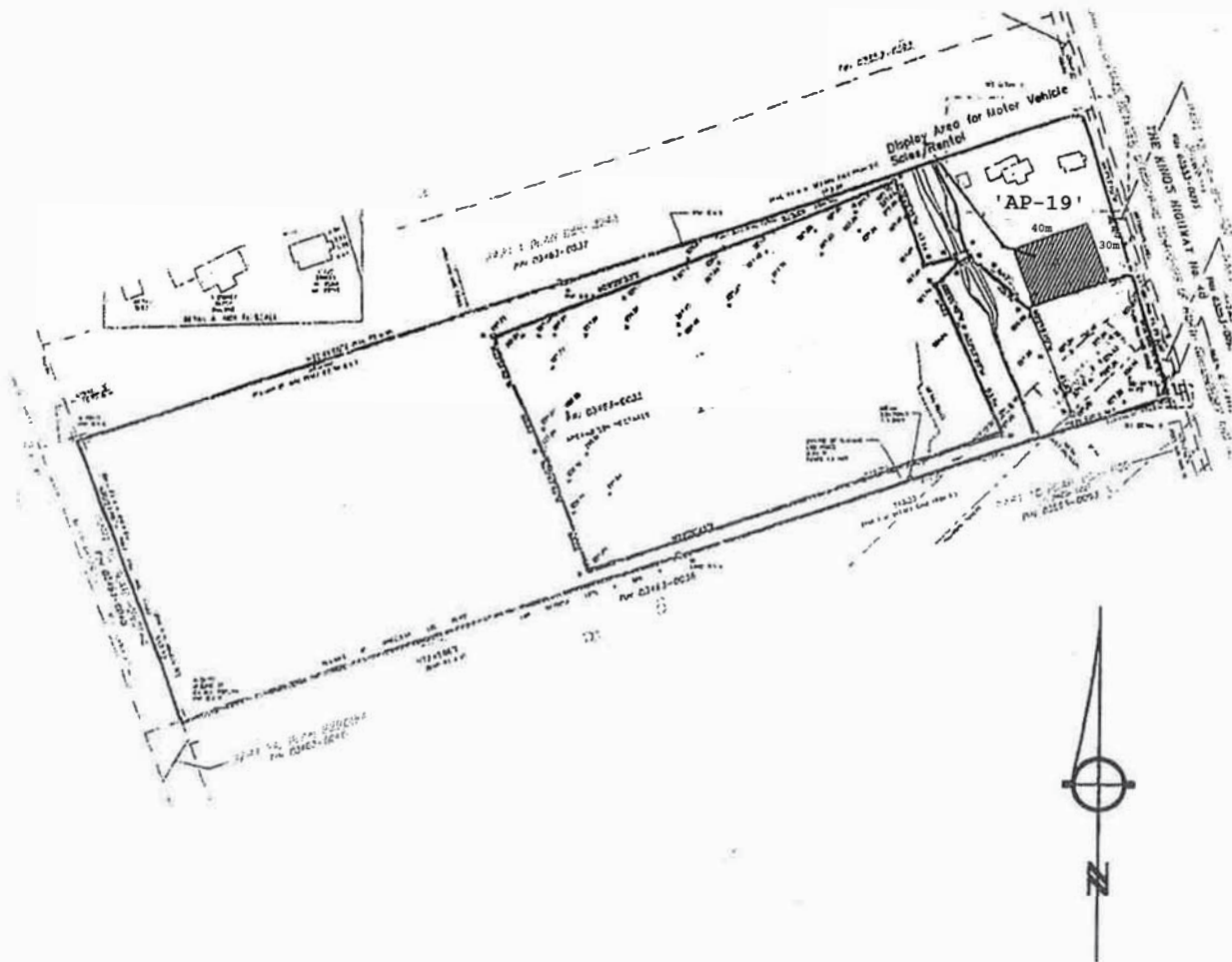


0 10 20 40 60 80 Metres

SCHEDULE 'C-2'

PART OF LOT 7 CONCESSION 8(NG)
TOWN OF GEORGINA
THE REGIONAL MUNICIPALITY OF YORK

*FORMERLY TOWNSHIP OF NORTH GWILLIMBURY
COUNTY OF YORK*



NOTE:
This Schedule "B-61" is based
on a Plan bearing date of July 31, 2007,
prepared by Perling Survey Inc.
File 06-6308

SCHEDULE 'C-3'



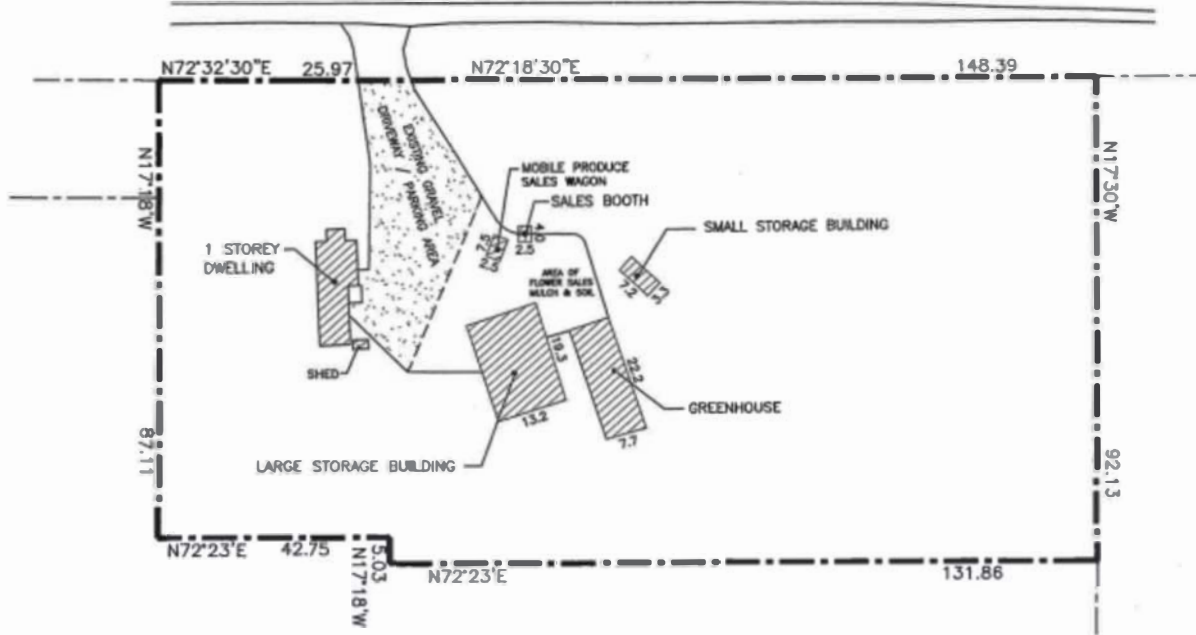
PART OF LOT 11, CONCESSION 6 (G)
 TOWN OF GEORGINA
 THE REGIONAL MUNICIPALITY OF YORK

FORMERLY IN THE TOWNSHIP OF GEORGINA
 COUNTY OF YORK

LEGEND

-  EXISTING BUILDINGS AND STRUCTURES
-  EXISTING GRAVEL DRIVEWAY / PARKING AREA

HIGHWAY 48



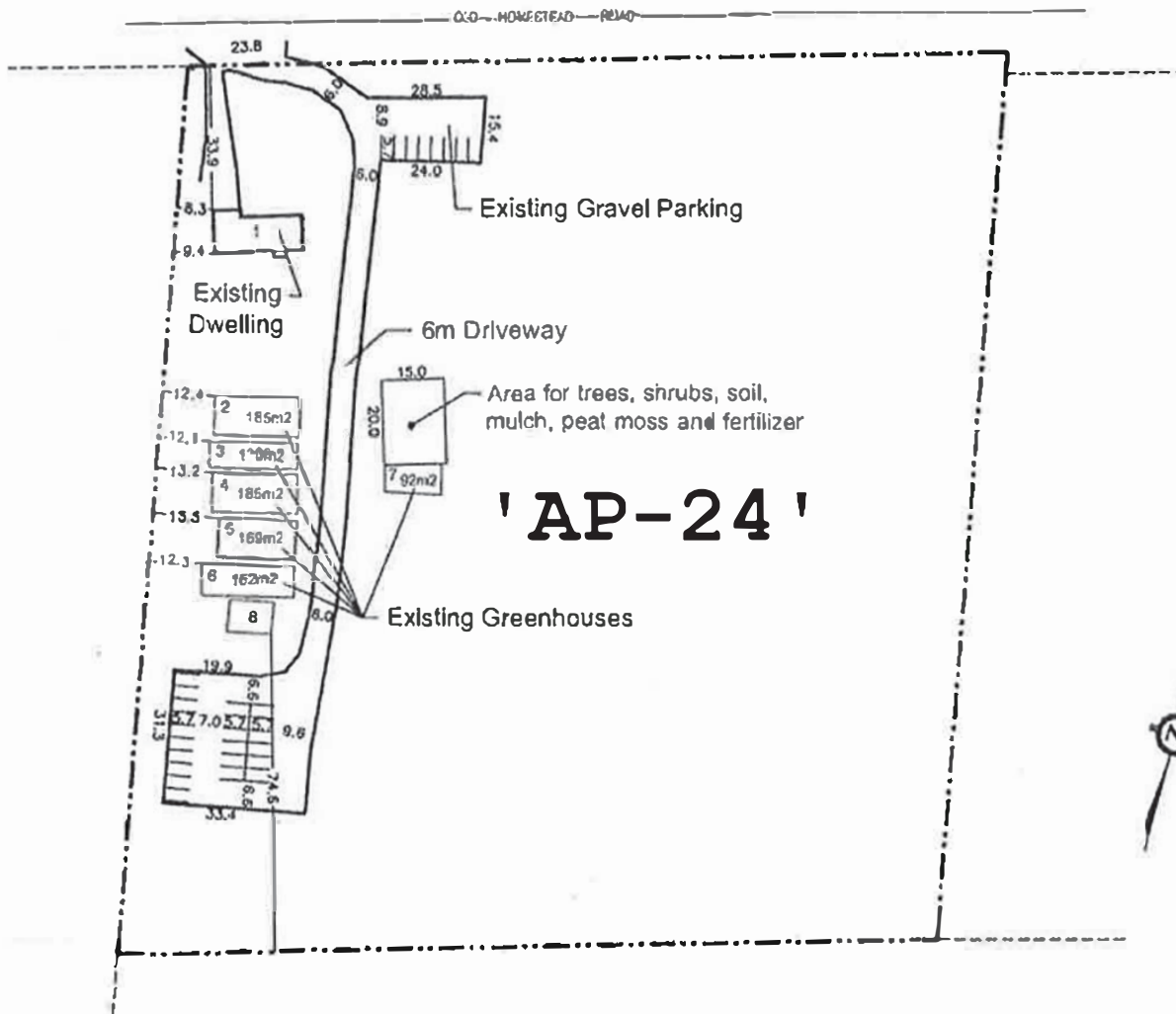
SCHEDULE 'C-4'



2563 OLD HOMESTEAD ROAD
TOWN OF GEORGINA
REGIONAL MUNICIPALITY OF YORK

THIS IS SCHEDULE 'B' TO
BY-LAW 500-2018-0001
PASSED THIS 10th DAY OF
JANUARY 2018

John Espinosa
CLEAR
Michael D'Amico
MAYOR

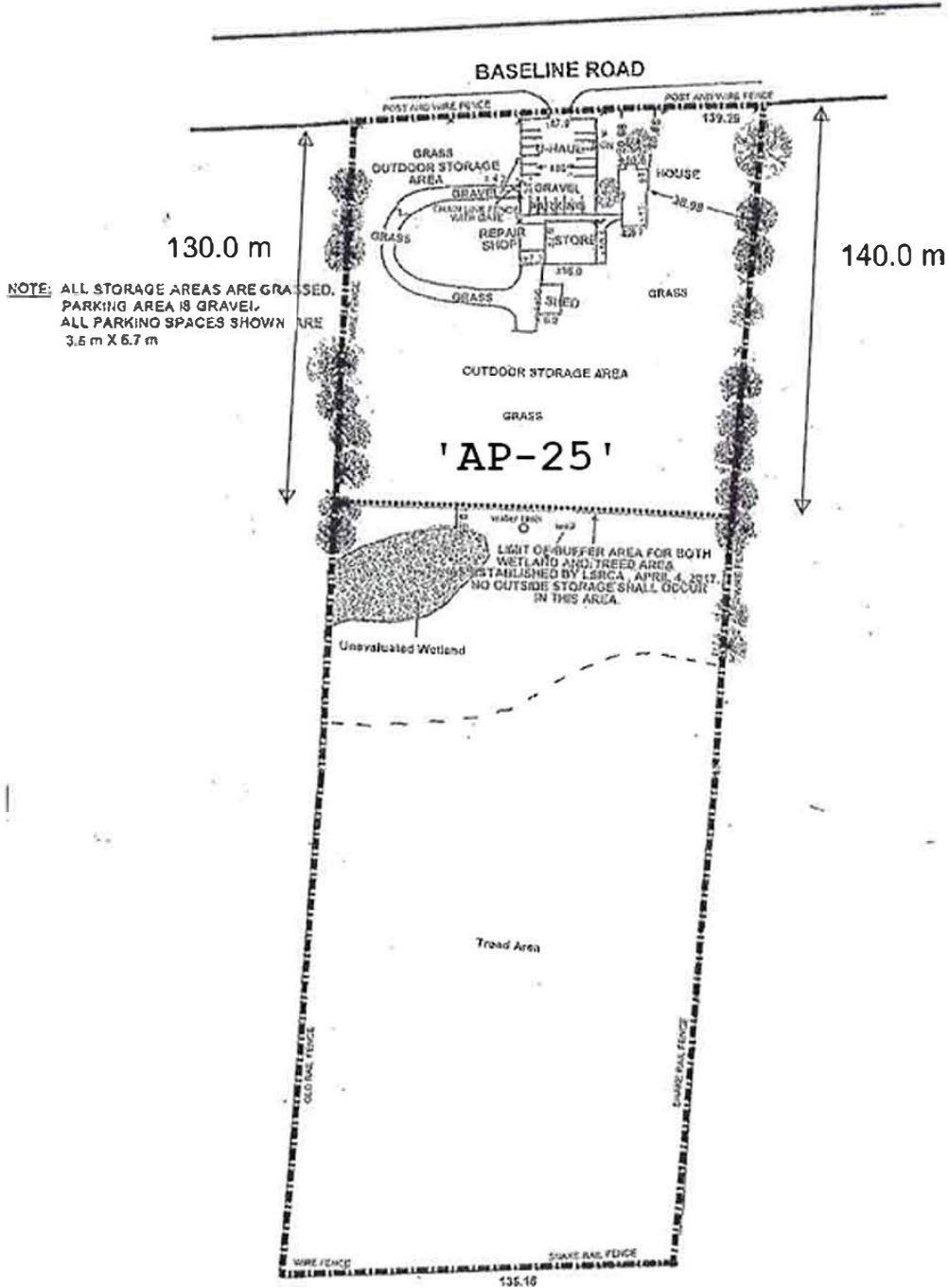


20 0 20 40m

SCHEDULE 'C-5'

CONCESSION 5, PART LOT 23 (NG)
 TOWN OF GEORGINA
 THE REGIONAL MUNICIPALITY OF YORK

FORMERLY TOWNSHIP OF NORTH GWILLIMBURY
 COUNTY OF YORK

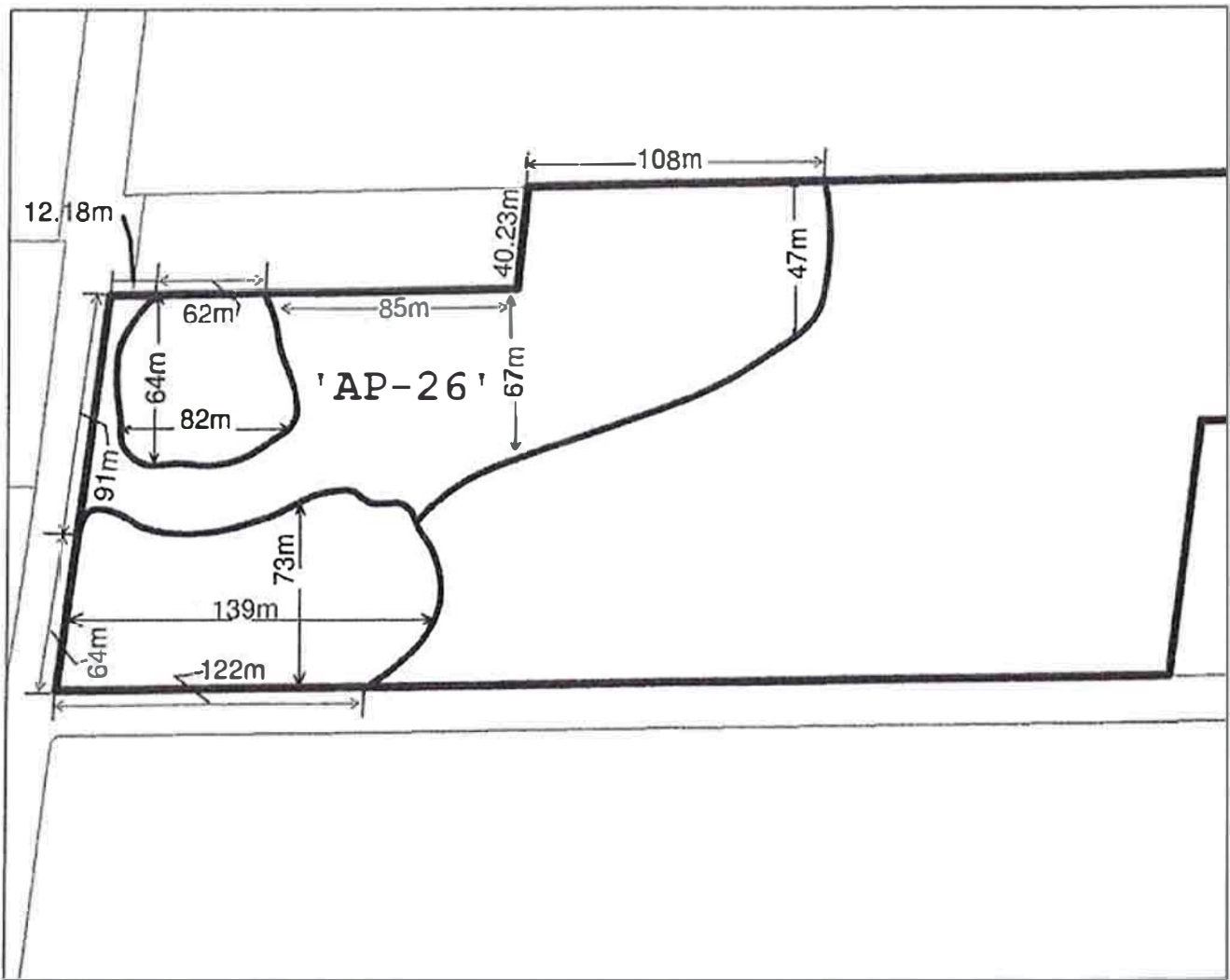


SCALE 1:1000 ROR PLANNING CENTRES

SCHEDULE 'C-6'

PART OF LOTS 13 AND 14 , CONCESSION 7(NG)
TOWN OF GEORGINA
THE REGIONAL MUNICIPALITY OF YORK

FORMERLY TOWNSHIP OF NORTH GWILLIMBURY
COUNTY OF YORK

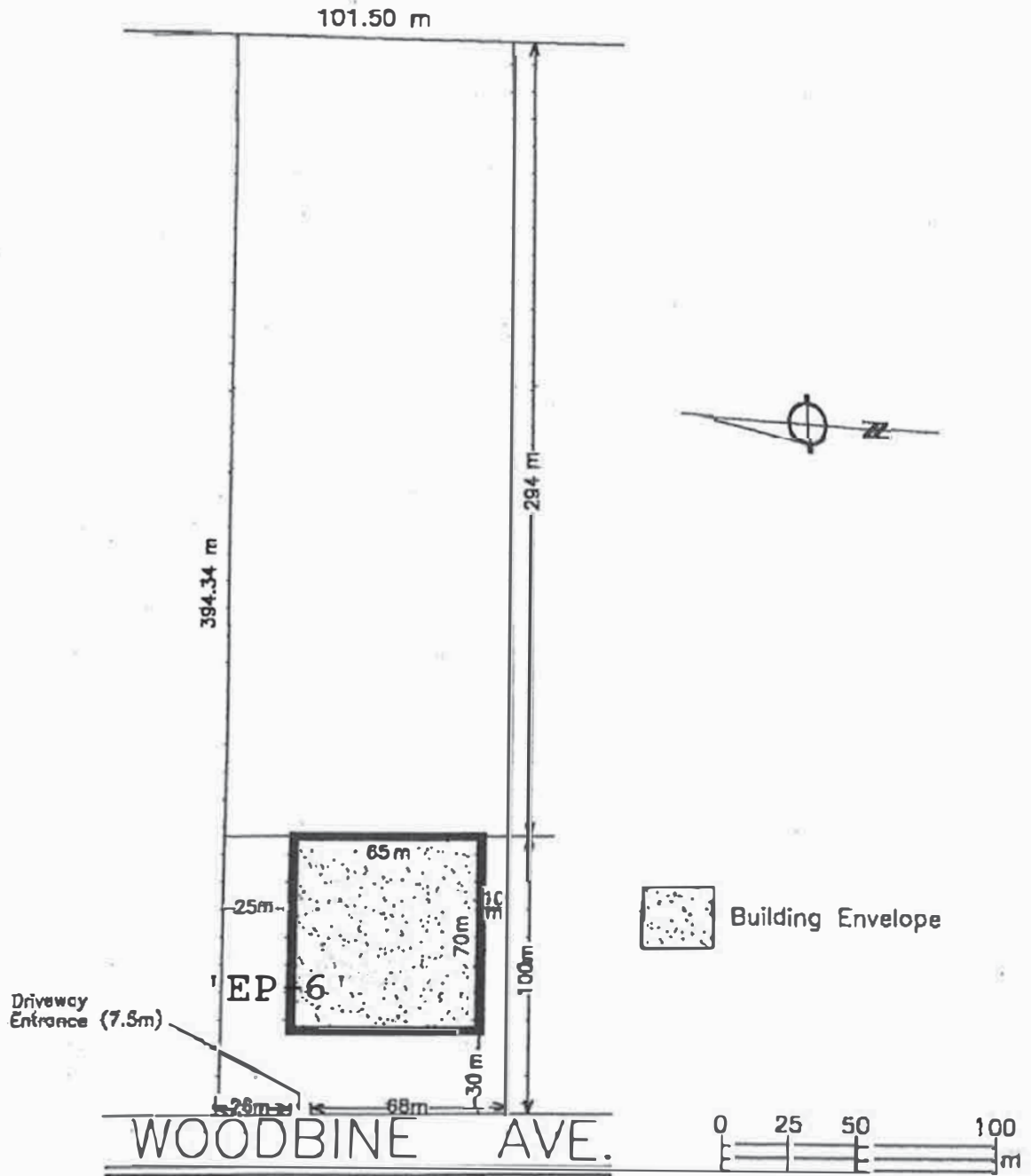


SCHEDULE 'C-7'



PART OF LOT 1 CONCESSION 9(NG)
TOWN OF GEORGINA
THE REGIONAL MUNICIPALITY OF YORK

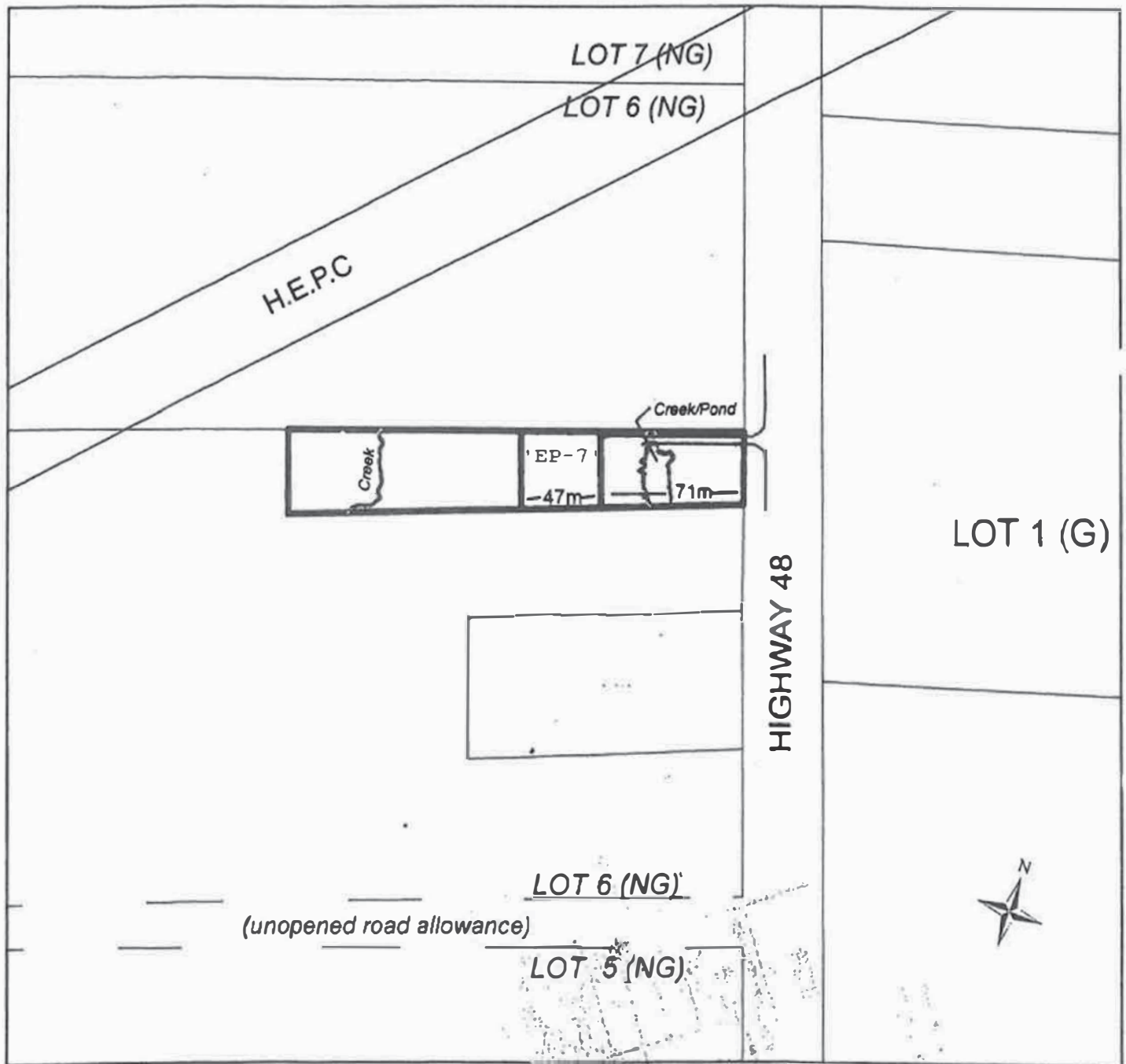
FORMERLY TOWNSHIP OF GEORGINA
COUNTY OF YORK



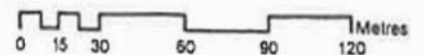
SCHEDULE 'C-8'

PART OF LOT 6 CONCESSION 8 (NG)
TOWN OF GEORGINA
THE REGIONAL MUNICIPALITY OF YORK

FORMERLY TOWNSHIP OF NORTH GWILLIMBURY
COUNTY OF YORK

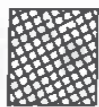
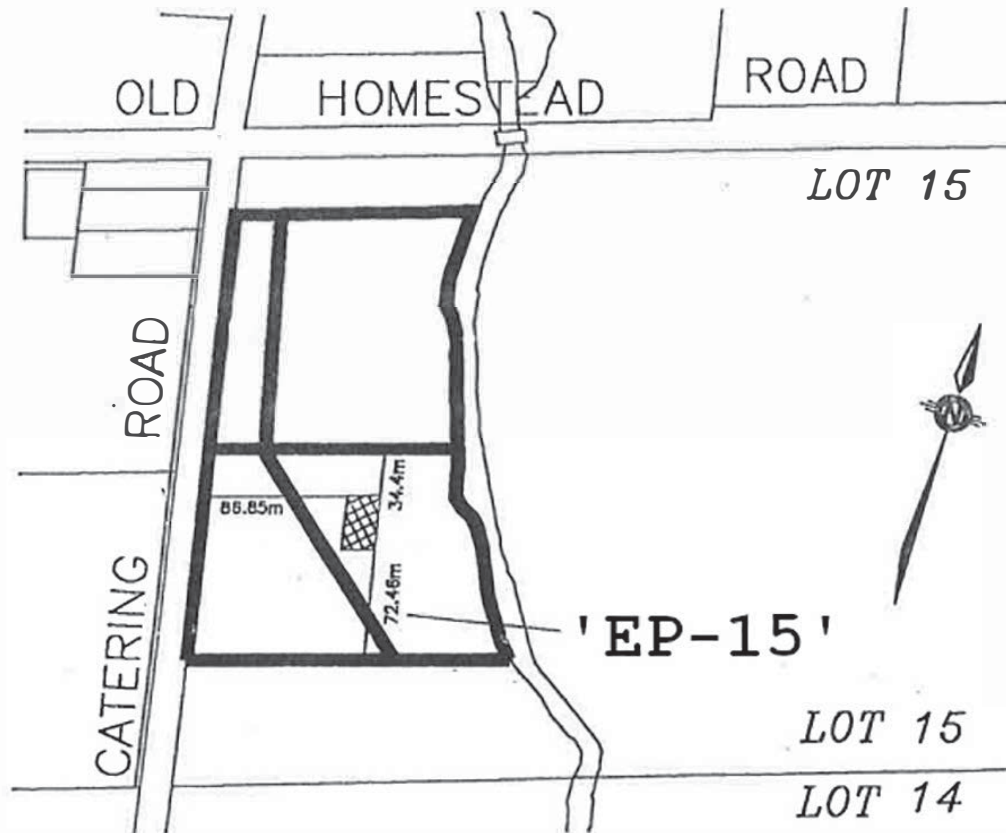


SCHEDULE 'C-9'

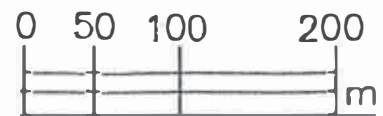


PART OF LOT 15 CONCESSION 7(NG)
TOWN OF GEORGINA
THE REGIONAL MUNICIPALITY OF YORK

*FORMERLY TOWNSHIP OF NORTH GWILLIMBURY
COUNTY OF YORK*



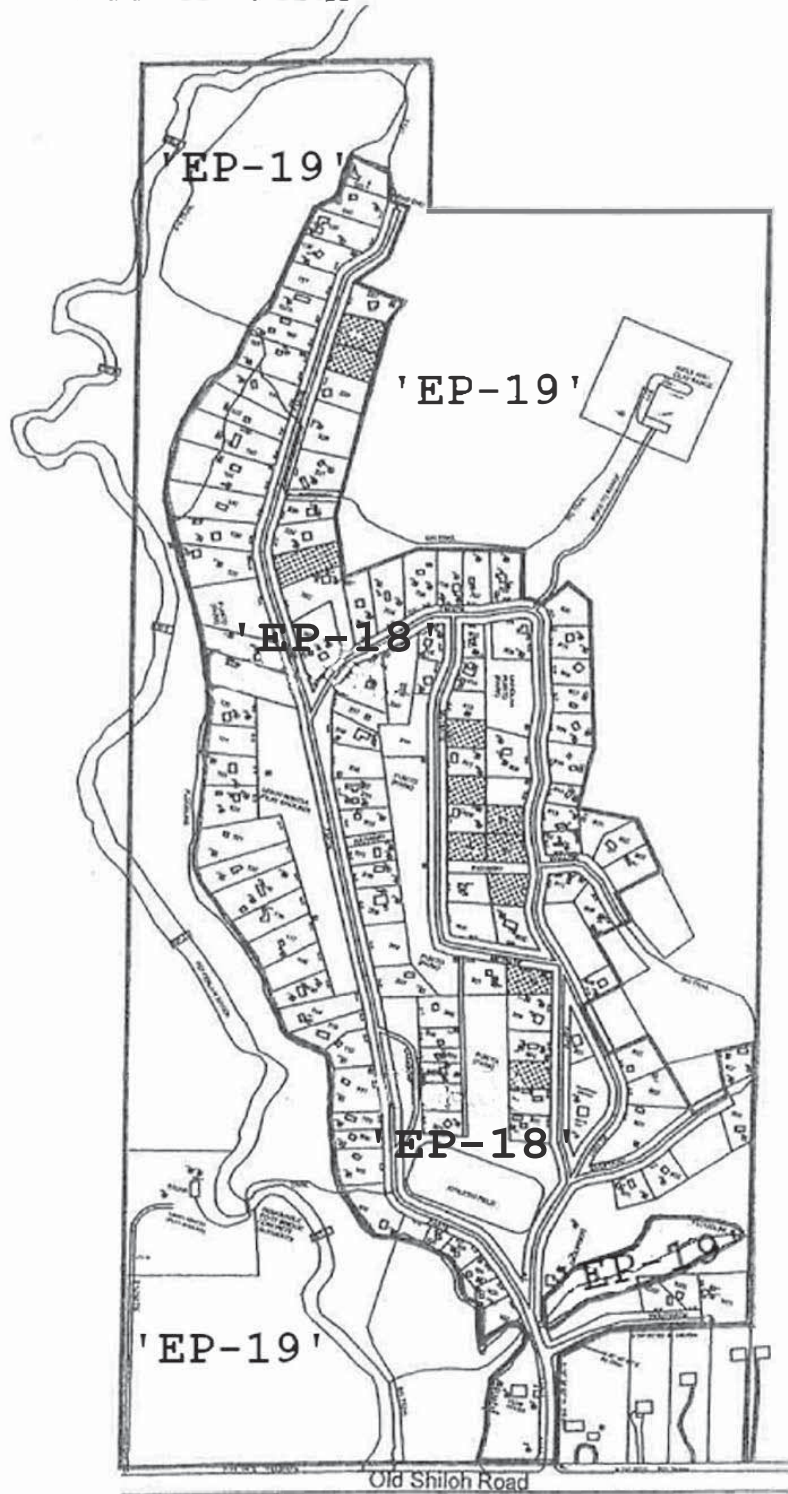
Frame Barn



SCHEDULE 'C-10'

PART OF LOTS 20 AND 21 CONCESSION 2 (G)
TOWN OF GEORGINA
THE REGIONAL MUNICIPALITY OF YORK

*FORMERLY THE TOWNSHIP OF GEORGINA
COUNTY OF YORK*

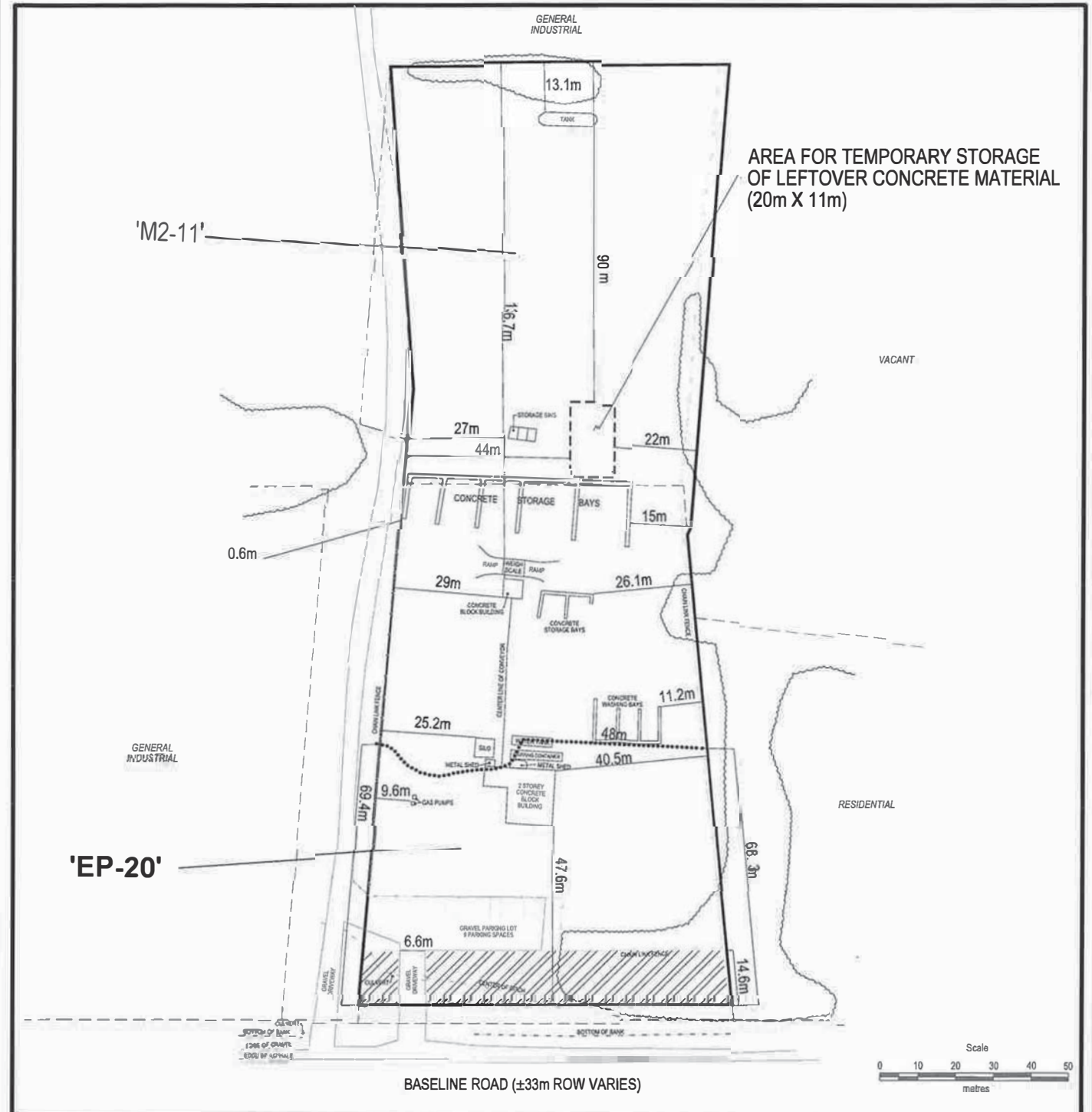


SCHEDULE 'C-11'



SCHEDULE 'C-12'

4440 BASELINE ROAD, PART OF LOT 15, CONCESSION 9
TOWN OF GEORGINA
REGIONAL MUNICIPALITY OF YORK
FORMERLY TOWNSHIP OF NORTH GWILLIMBURY
COUNTY OF YORK



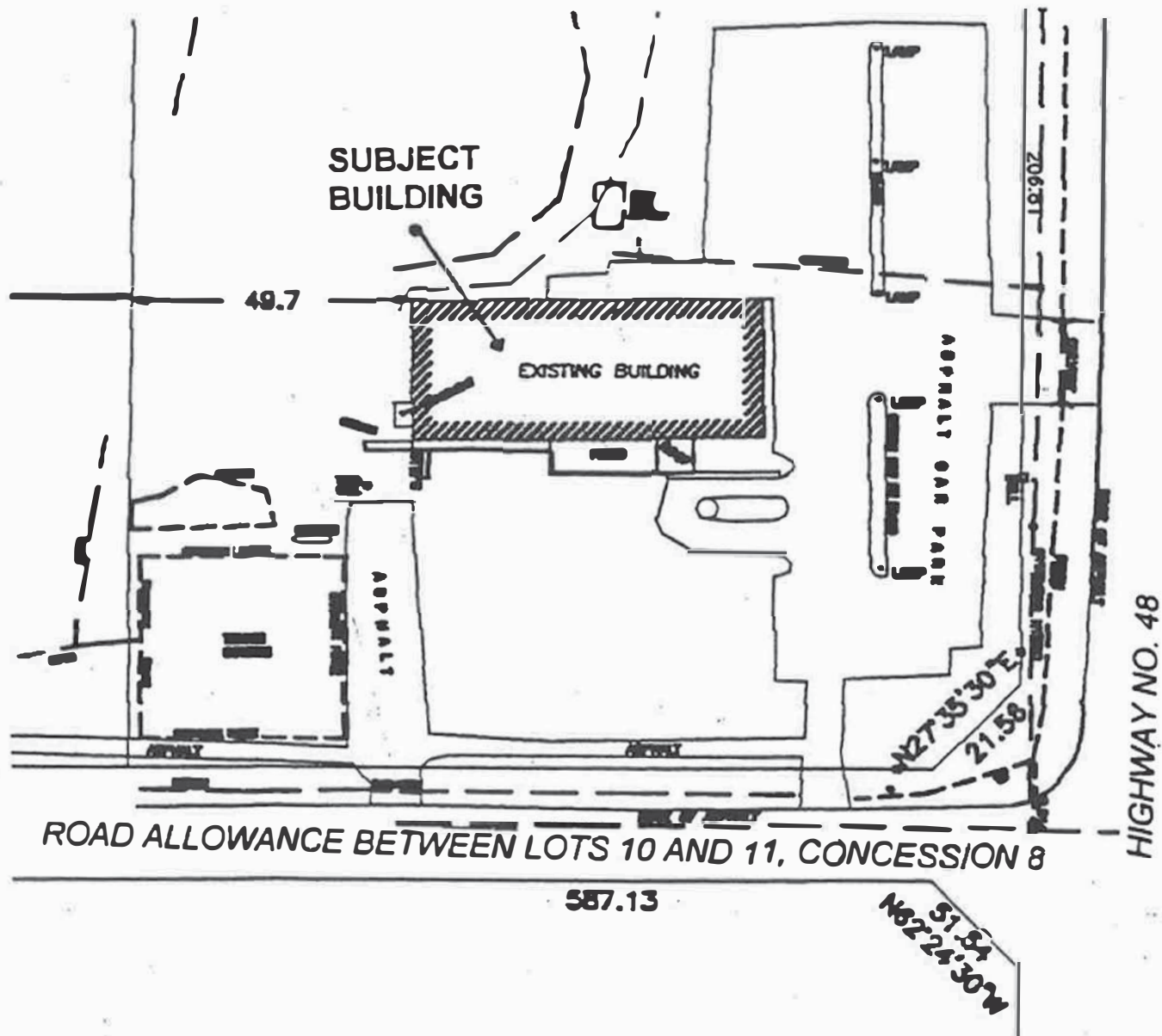
Subject Property

Existing Planting Strip (14.6m wide)

SCHEDULE 'C-12'

LOT 11, CONCESSION 8 (NG)
TOWN OF GEORGINA
THE REGIONAL MUNICIPALITY OF YORK

FORMERLY TOWNSHIP OF NORTH GWILLIMBURY
COUNTY OF YORK



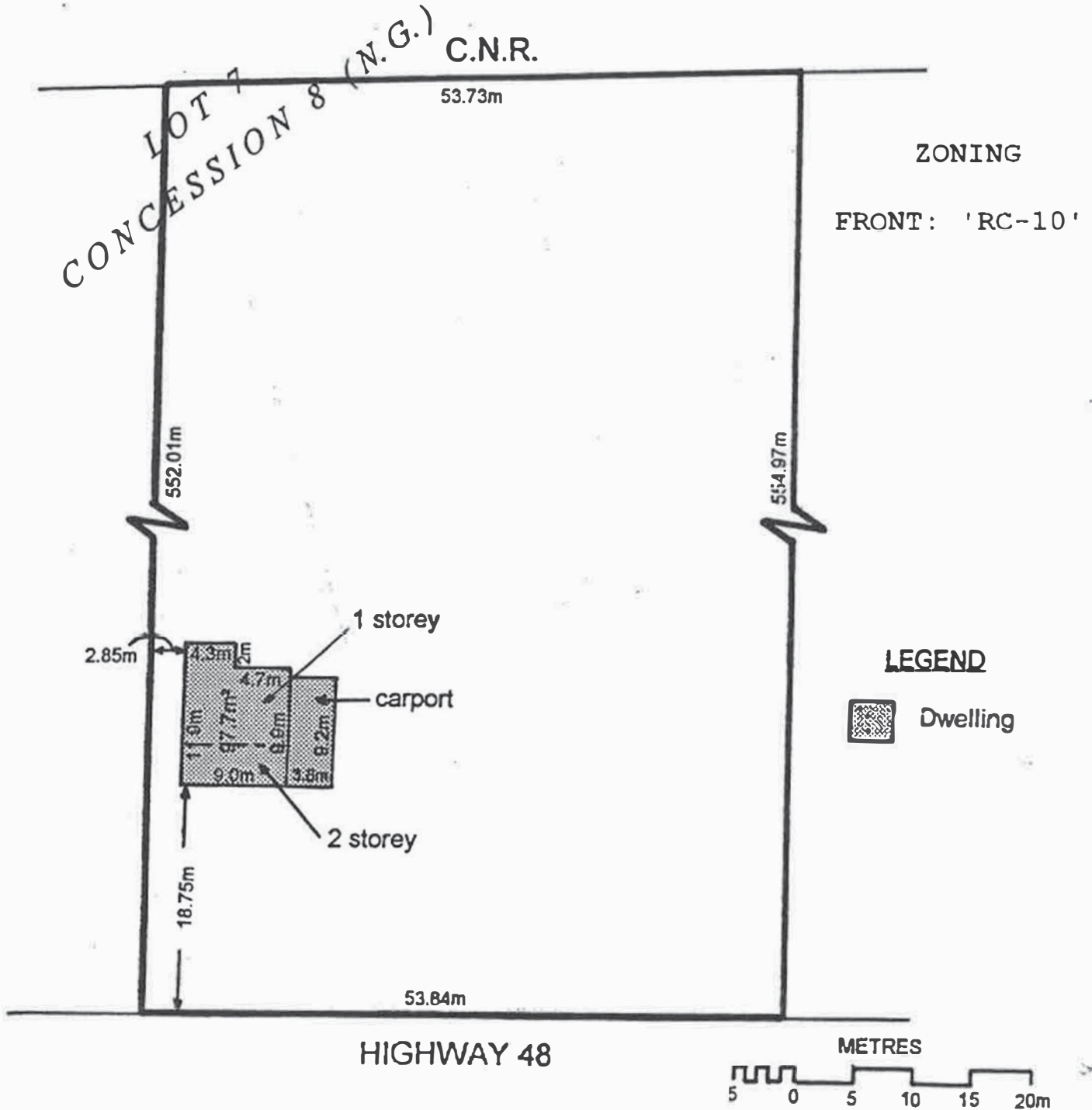
REDUCED PHOTOCOPY: NOT TO SCALE.

SCHEDULE 'C-13'

**ZONING
CR-3**

PART OF LOT 7, CONCESSION 8 (N.G.)
TOWN OF GEORGINA
THE REGIONAL MUNICIPALITY OF YORK

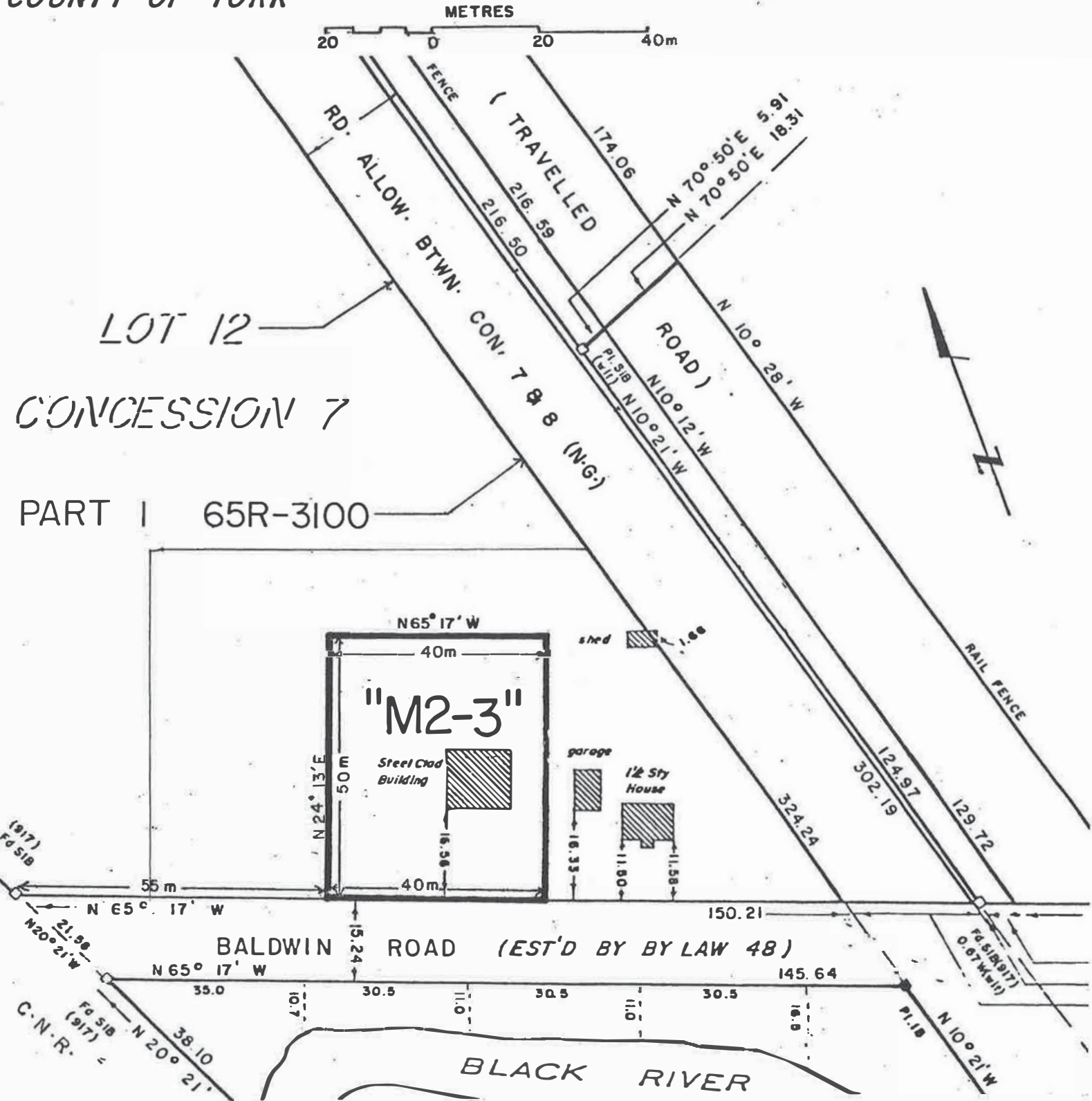
FORMERLY TOWNSHIP OF NORTH GWILLIMBURY
COUNTY OF YORK



SCHEDULE 'C-14'

PART OF LOT 12 CONCESSION 7
 TOWN OF GEORGINA
 THE REGIONAL MUNICIPALITY OF YORK

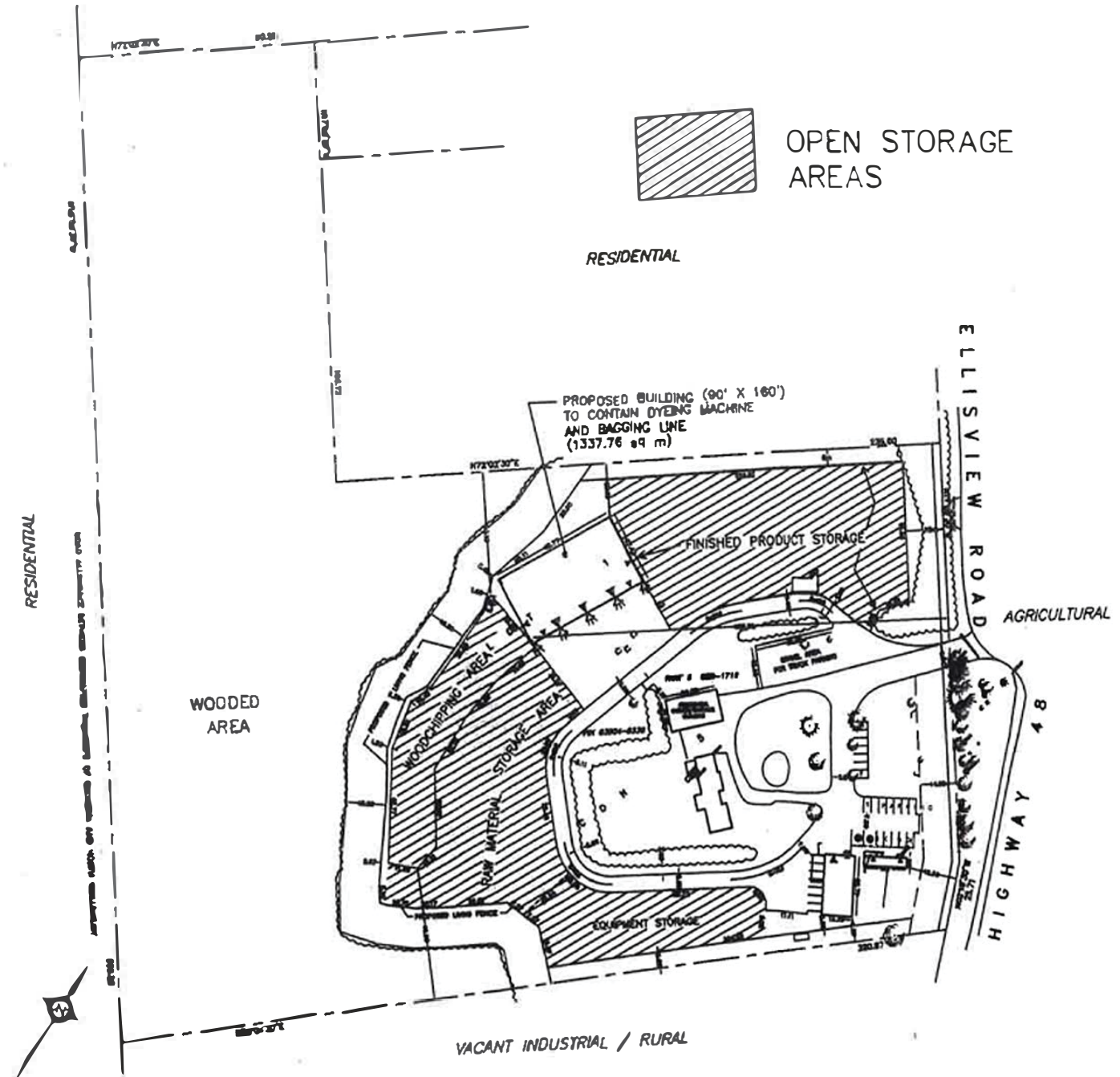
FORMERLY TOWNSHIP OF NORTH GWILLIMBURY
 COUNTY OF YORK



SCHEDULE 'C-15'

PART OF LOT 1, CONCESSION 5 (G)
TOWN OF GEORGINA
THE REGIONAL MUNICIPALITY OF YORK

FORMERLY TOWNSHIP OF GEORGINA
COUNTY OF YORK



SCHEDULE 'C-16'