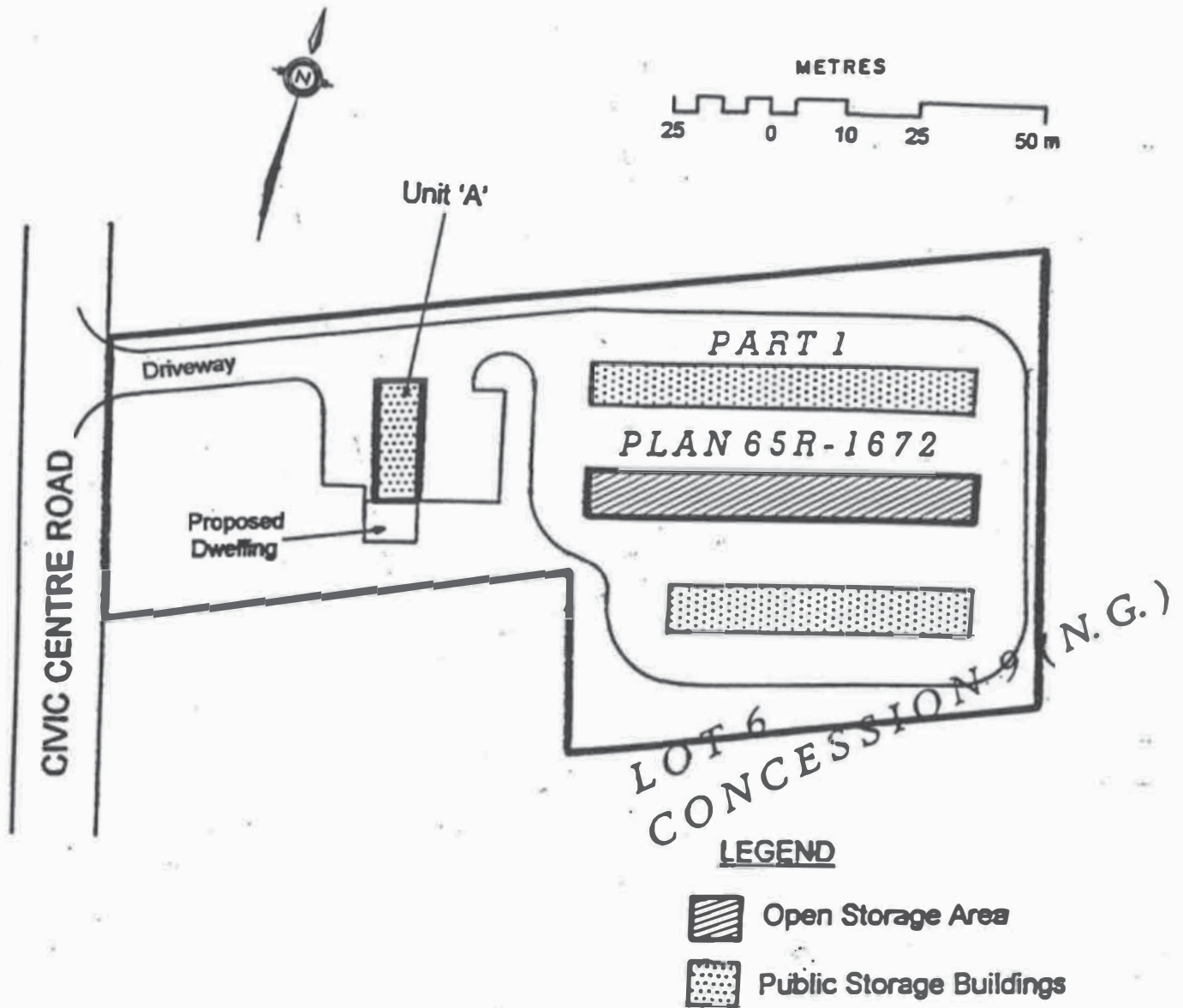


**SCHEDULE 'C'**

**DETAILED ILLUSTRATIONS**

PART 1, PLAN 65R-1672  
PART OF LOT 6, CONCESSION 9 (N.G.)  
TOWN OF GEORGINA  
THE REGIONAL MUNICIPALITY OF YORK

FORMERLY TOWNSHIP OF NORTH GWILLIMBURY  
COUNTY OF YORK



SCHEDULE 'C-1'

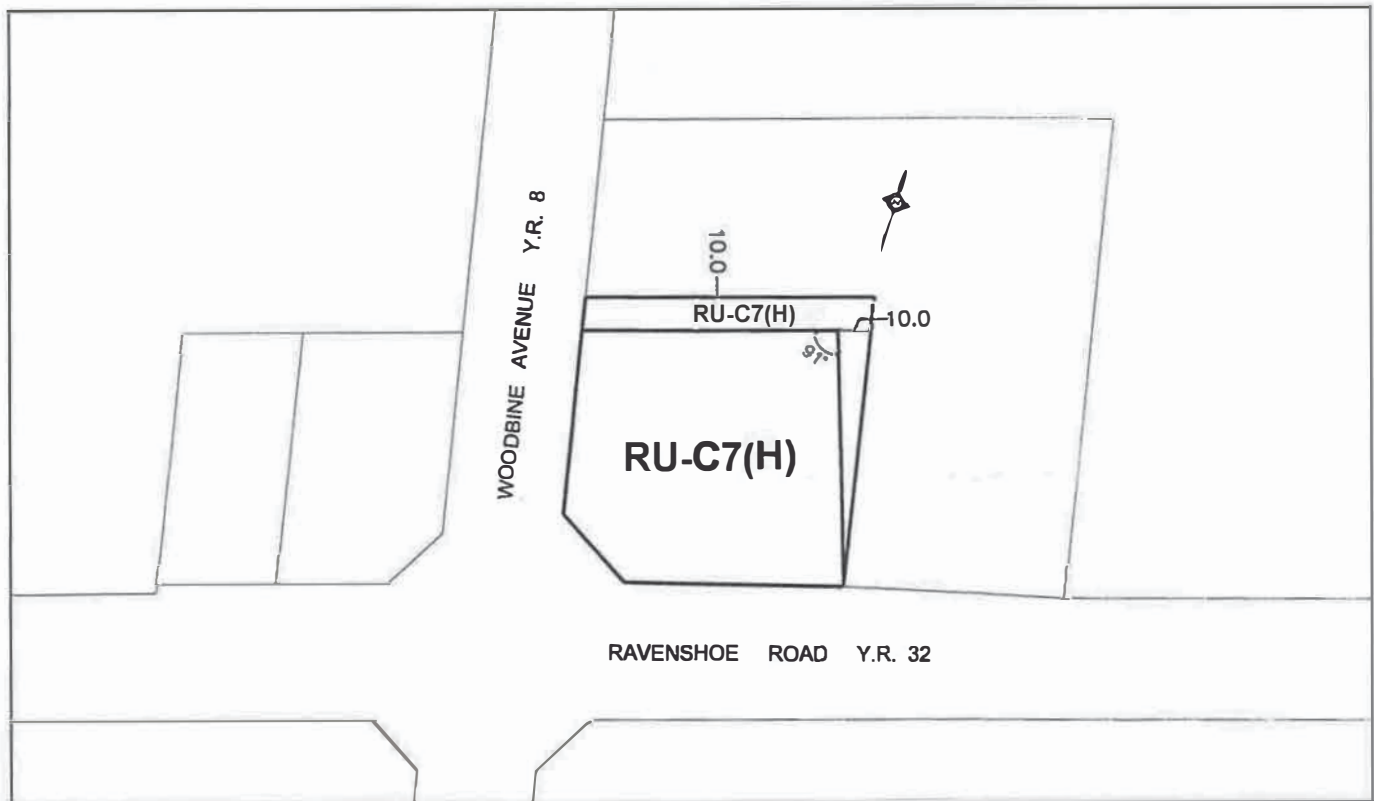
PART OF LOT 1, CONCESSION 4 (N.G.)  
TOWN OF GEORGINA  
THE REGIONAL MUNICIPALITY OF YORK

THIS IS SCHEDULE 'C' TO  
BYLAW 500-2010-0009  
PASSED THIS 19th DAY OF  
July, 2010

  
CLERK

  
MAYOR

FORMERLY IN THE TOWNSHIP OF NORTH GWILLIMBURY  
COUNTY OF YORK

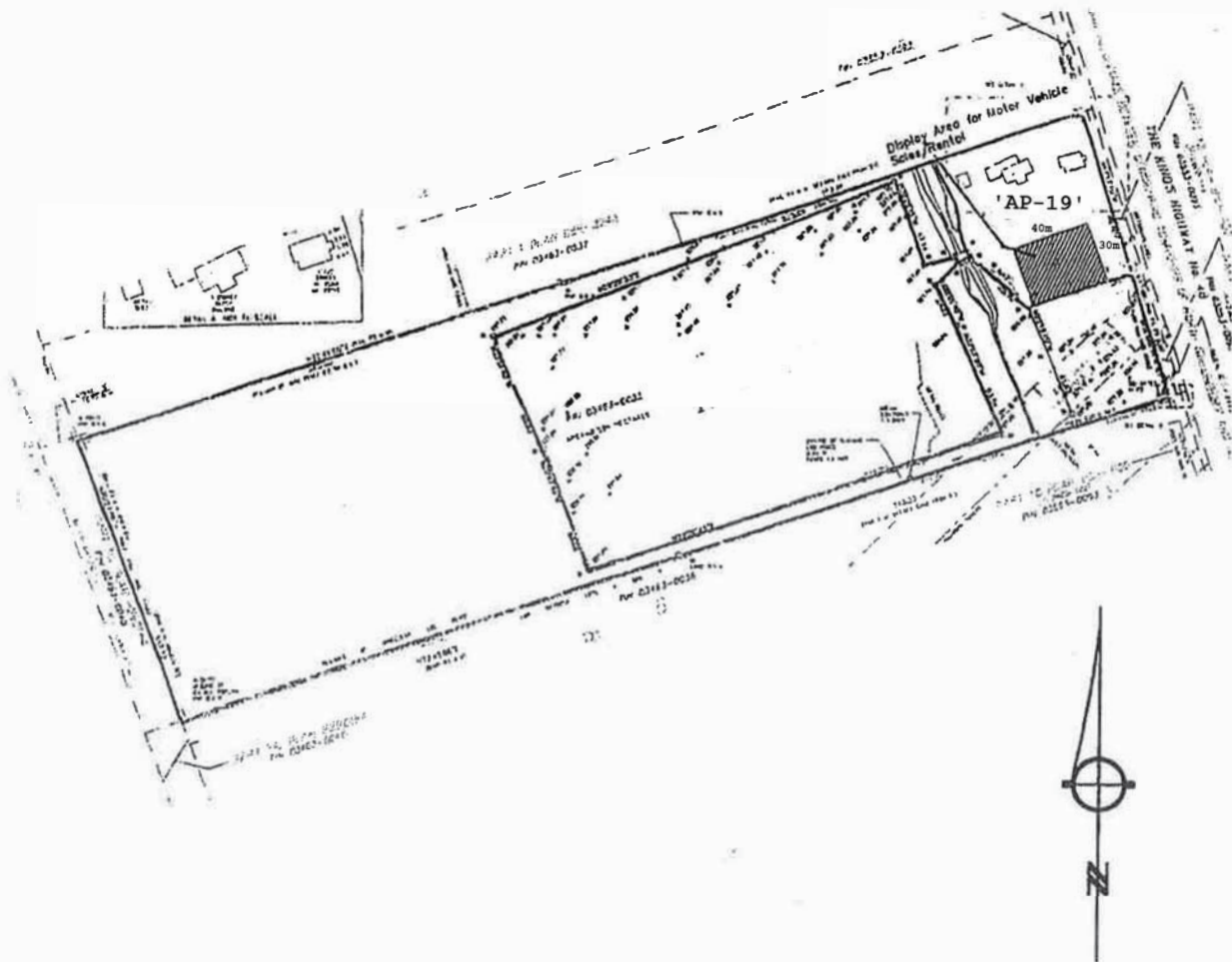


0 10 20 40 60 80 Metres

**SCHEDULE 'C-2'**

PART OF LOT 7 CONCESSION 8(NG)  
TOWN OF GEORGINA  
THE REGIONAL MUNICIPALITY OF YORK

*FORMERLY TOWNSHIP OF NORTH GWILLIMBURY  
COUNTY OF YORK*



**NOTE:**  
This Schedule "B-61" is based  
on a Plan bearing date of July 31, 2007,  
prepared by Perling Survey Inc.  
File 06-6308

**SCHEDULE 'C-3'**



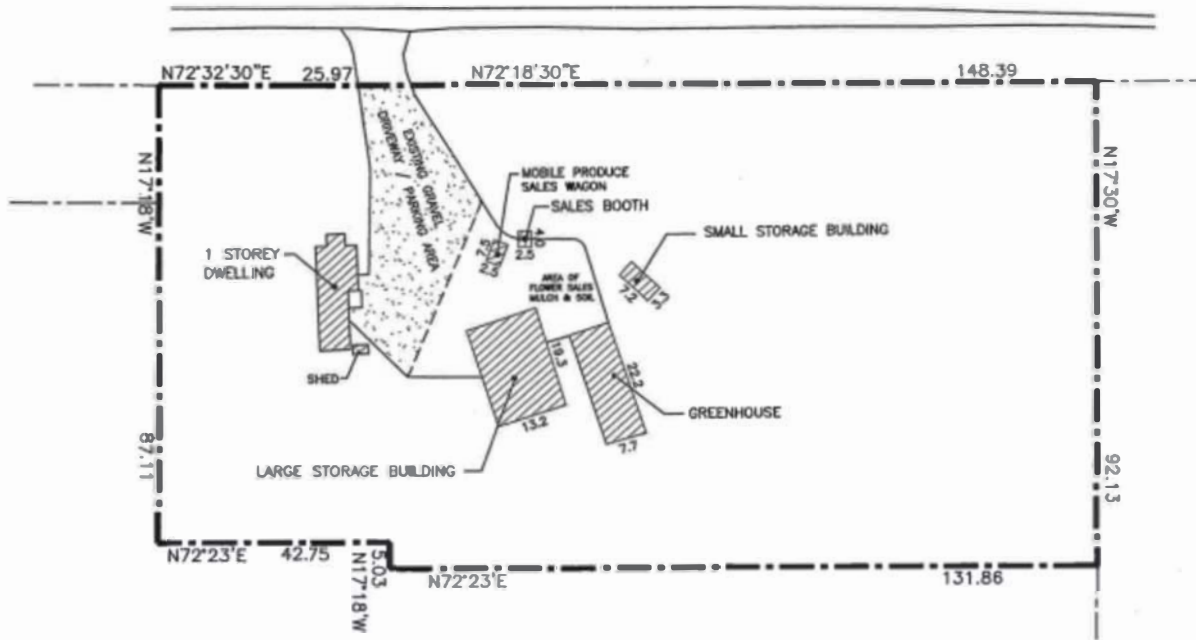
PART OF LOT 11, CONCESSION 6 (G)  
 TOWN OF GEORGINA  
 THE REGIONAL MUNICIPALITY OF YORK

FORMERLY IN THE TOWNSHIP OF GEORGINA  
 COUNTY OF YORK

**LEGEND**

-  EXISTING BUILDINGS AND STRUCTURES
-  EXISTING GRAVEL DRIVEWAY / PARKING AREA

HIGHWAY 48



**SCHEDULE 'C-4'**

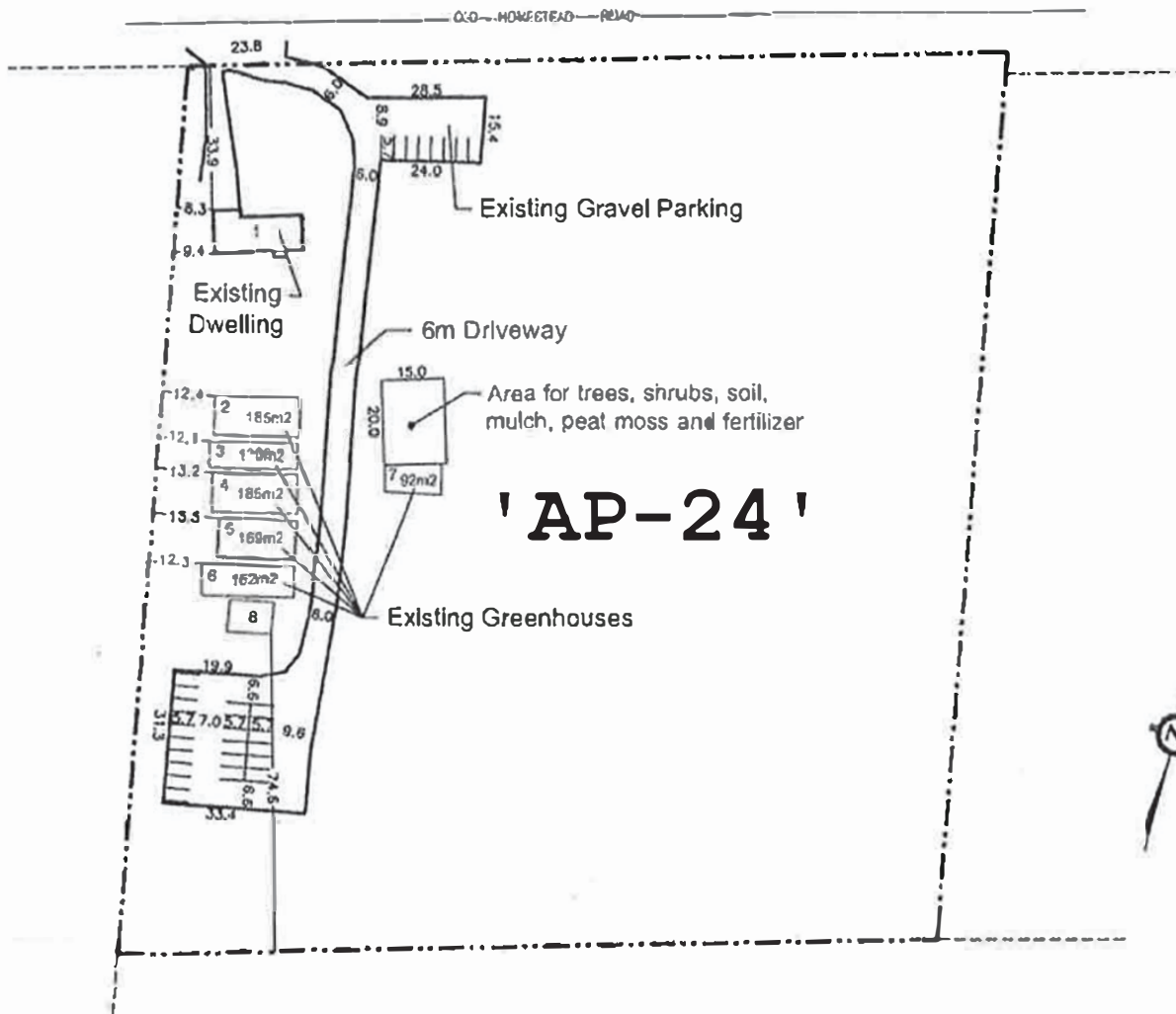
SCALE:  
 10 0 10 20 30m

2563 OLD HOMESTEAD ROAD  
TOWN OF GEORGINA  
REGIONAL MUNICIPALITY OF YORK

THIS IS SCHEDULE 'B' TO  
BY-LAW 500-2018-0001

PASSED THIS 10<sup>th</sup> DAY OF  
JANUARY 2018

John Espinosa  
CLEAR  
Mayor  
MAYOR

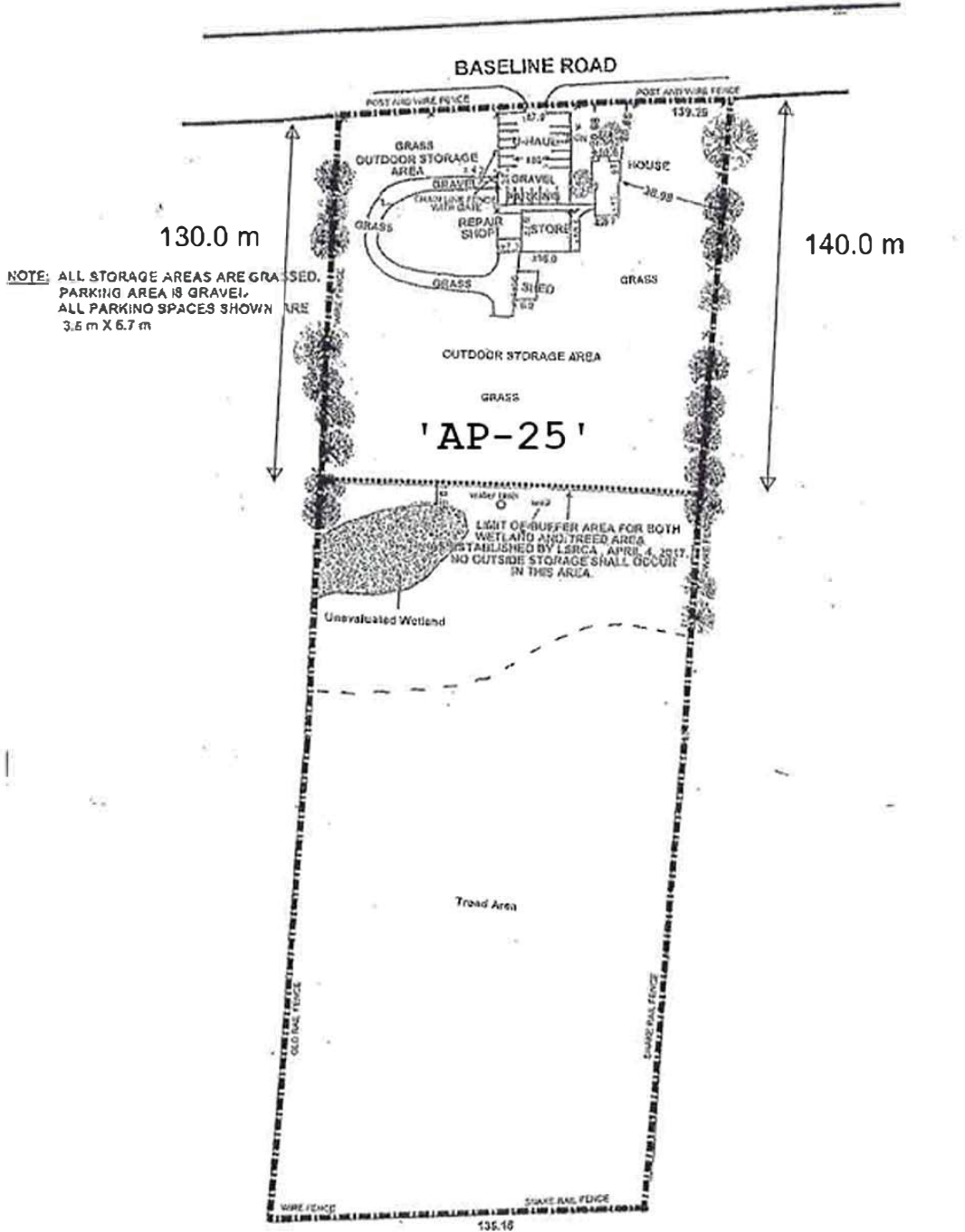


20 0 20 40m

SCHEDULE 'C-5'

CONCESSION 5, PART LOT 23 (NG)  
 TOWN OF GEORGINA  
 THE REGIONAL MUNICIPALITY OF YORK

FORMERLY TOWNSHIP OF NORTH GWILLIMBURY  
 COUNTY OF YORK

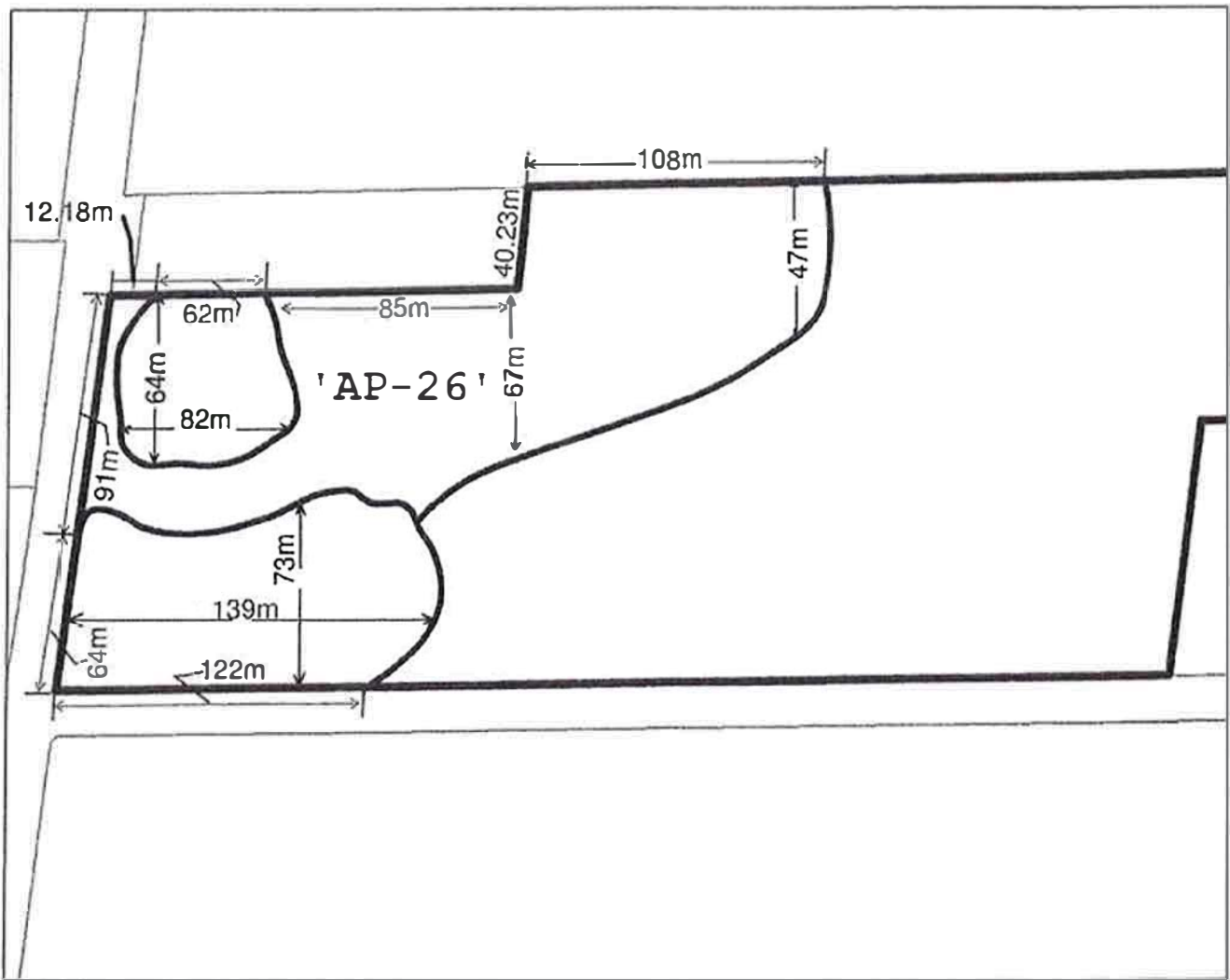


SCALE 1:1000 NOR PLANNING CENTRES

SCHEDULE 'C-6'

PART OF LOTS 13 AND 14 ,CONCESSION 7(NG)  
TOWN OF GEORGINA  
THE REGIONAL MUNICIPALITY OF YORK

FORMERLY TOWNSHIP OF NORTH GWILLIMBURY  
COUNTY OF YORK



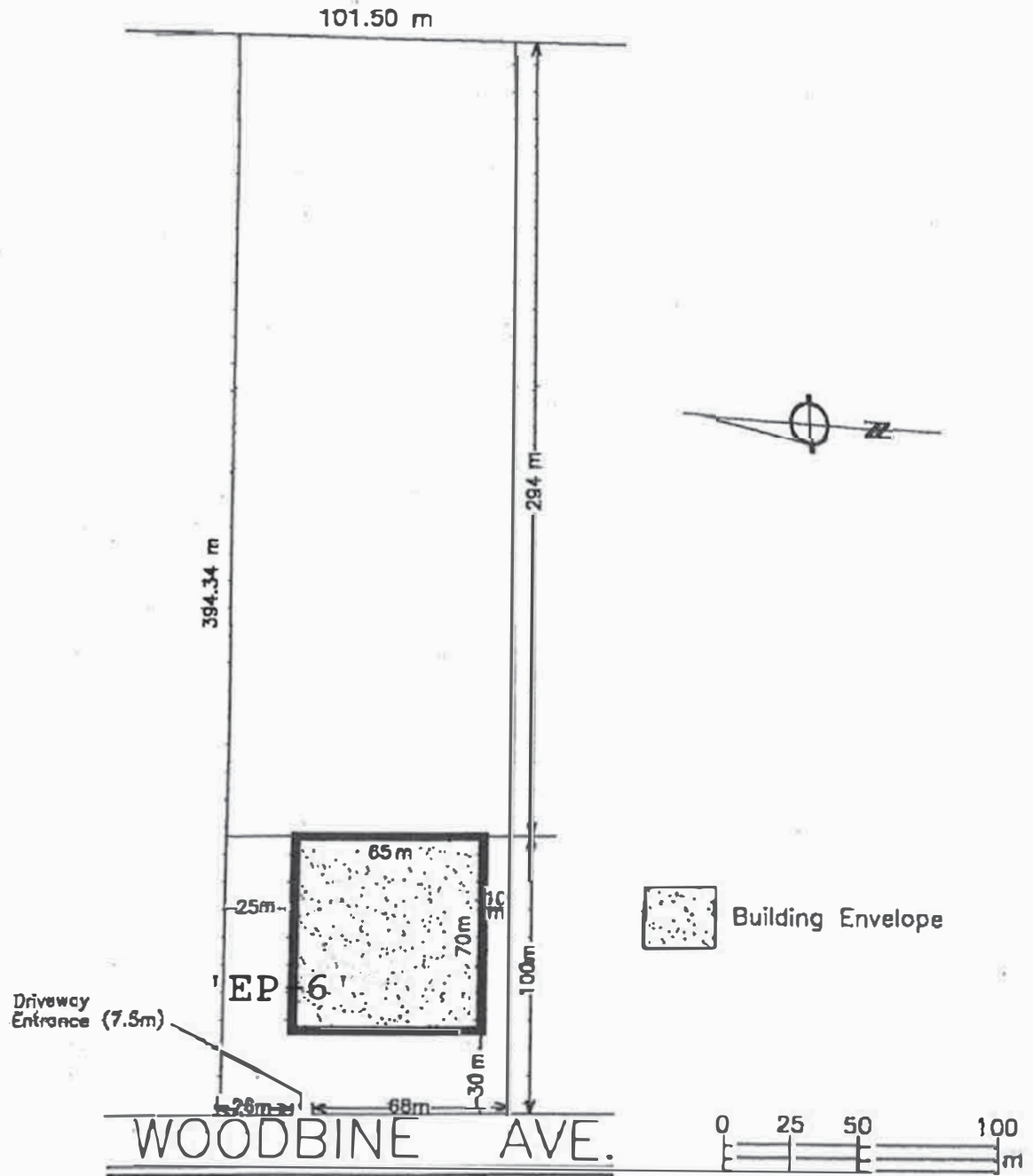
**SCHEDULE 'C-7'**





PART OF LOT 1 CONCESSION 9(NG)  
TOWN OF GEORGINA  
THE REGIONAL MUNICIPALITY OF YORK

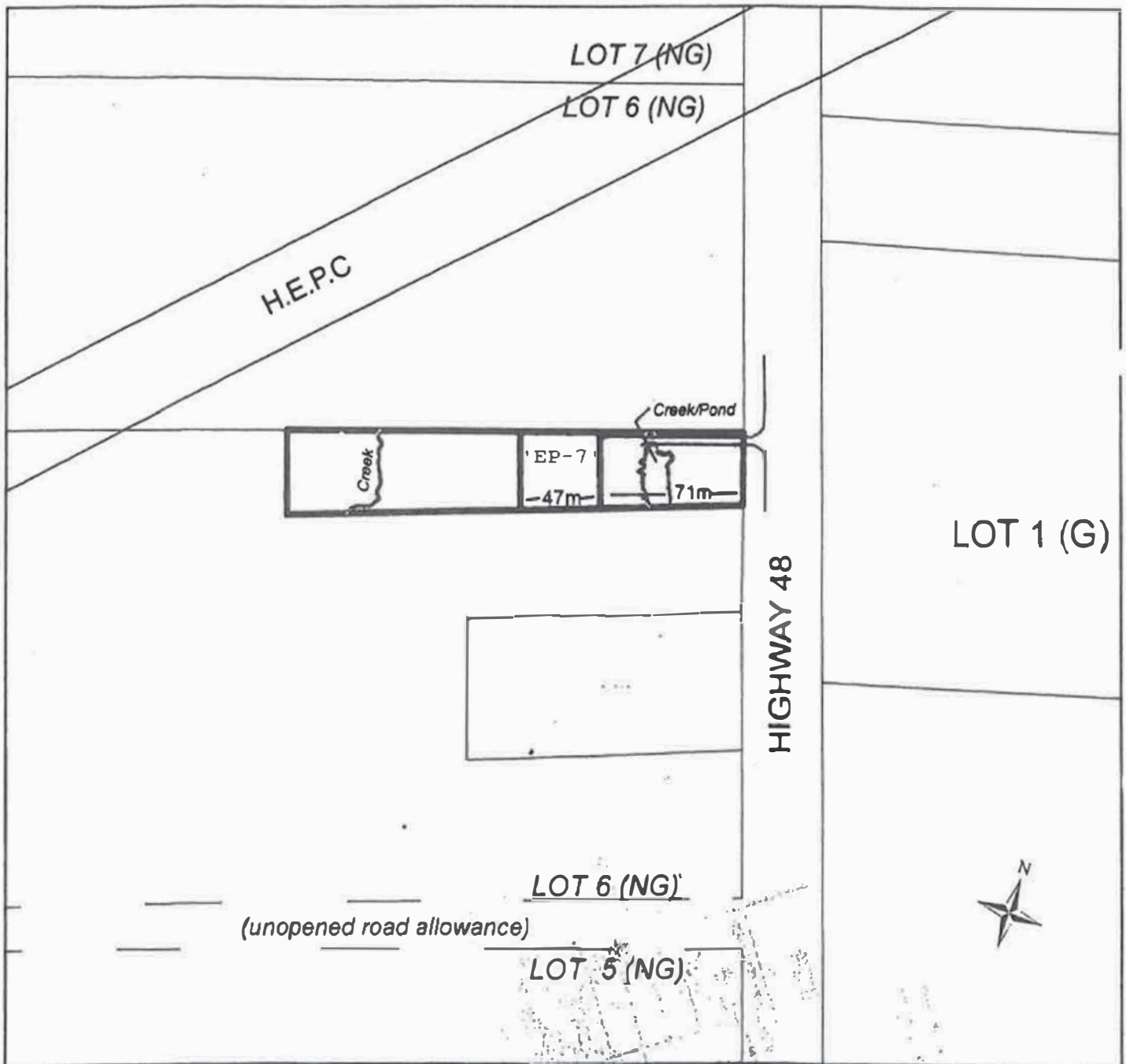
FORMERLY TOWNSHIP OF GEORGINA  
COUNTY OF YORK



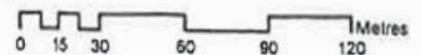
**SCHEDULE 'C-8'**

PART OF LOT 6 CONCESSION 8 (NG)  
TOWN OF GEORGINA  
THE REGIONAL MUNICIPALITY OF YORK

FORMERLY TOWNSHIP OF NORTH GWILLIMBURY  
COUNTY OF YORK

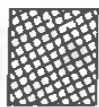
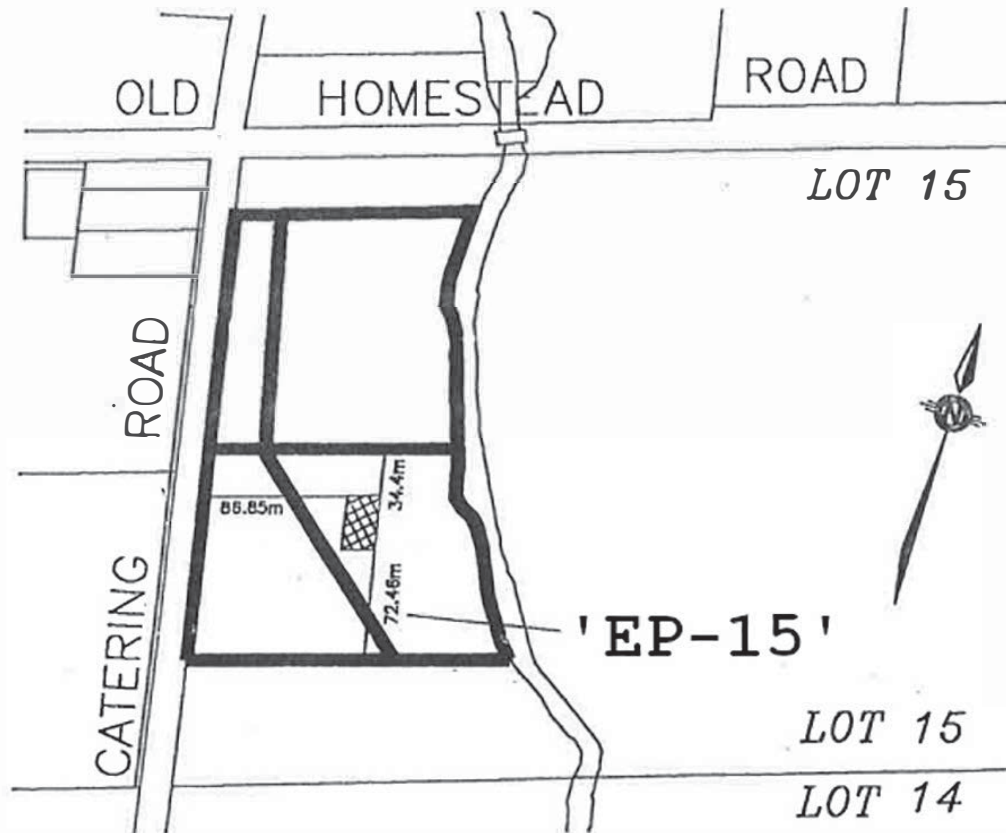


**SCHEDULE 'C-9'**

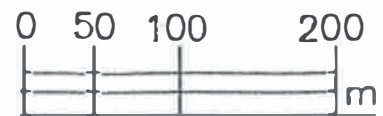


PART OF LOT 15 CONCESSION 7(NG)  
TOWN OF GEORGINA  
THE REGIONAL MUNICIPALITY OF YORK

*FORMERLY TOWNSHIP OF NORTH GWILLIMBURY  
COUNTY OF YORK*



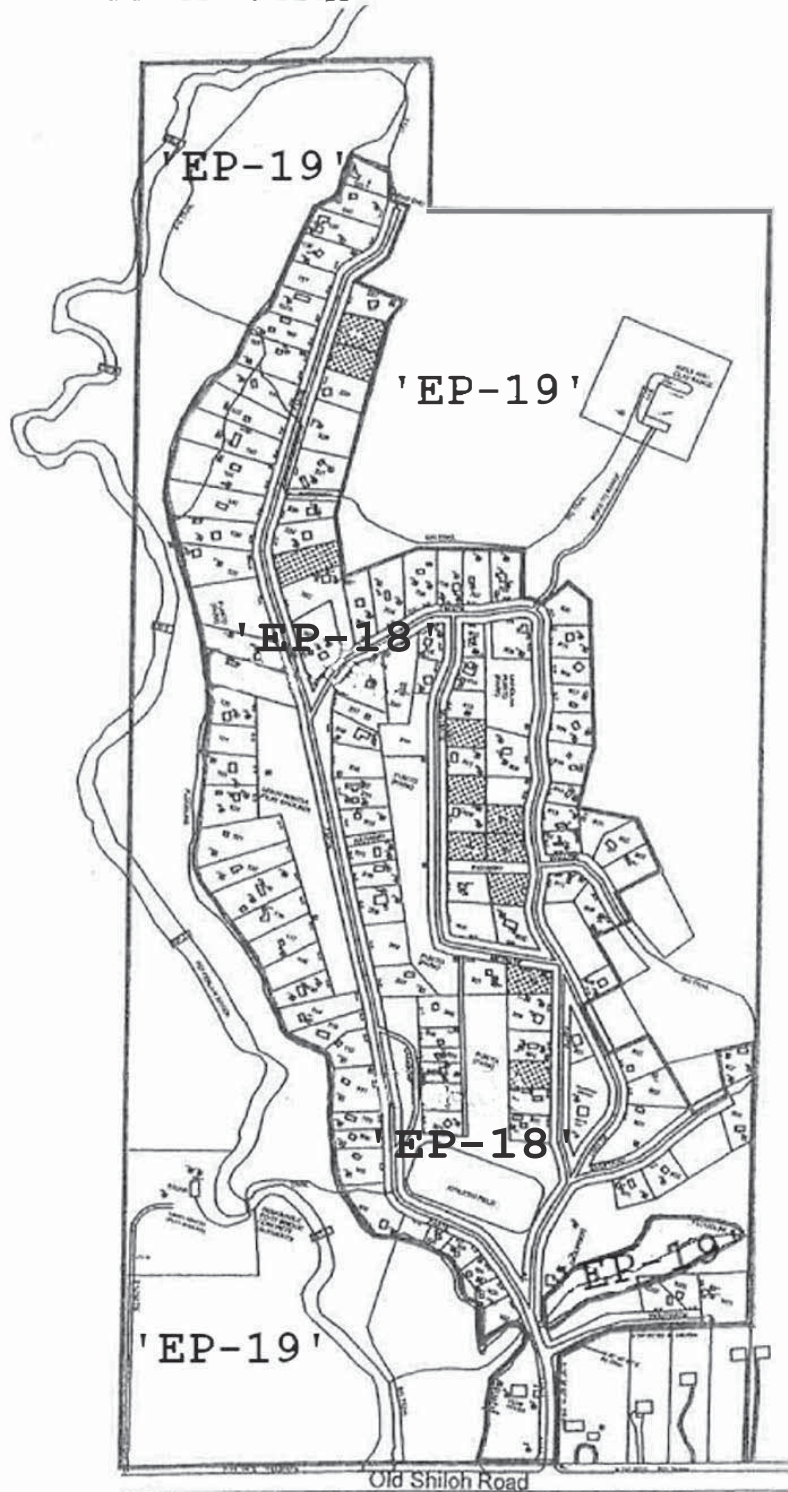
Frame Barn



**SCHEDULE 'C-10'**

PART OF LOTS 20 AND 21 CONCESSION 2 (G)  
TOWN OF GEORGINA  
THE REGIONAL MUNICIPALITY OF YORK

*FORMERLY THE TOWNSHIP OF GEORGINA  
COUNTY OF YORK*

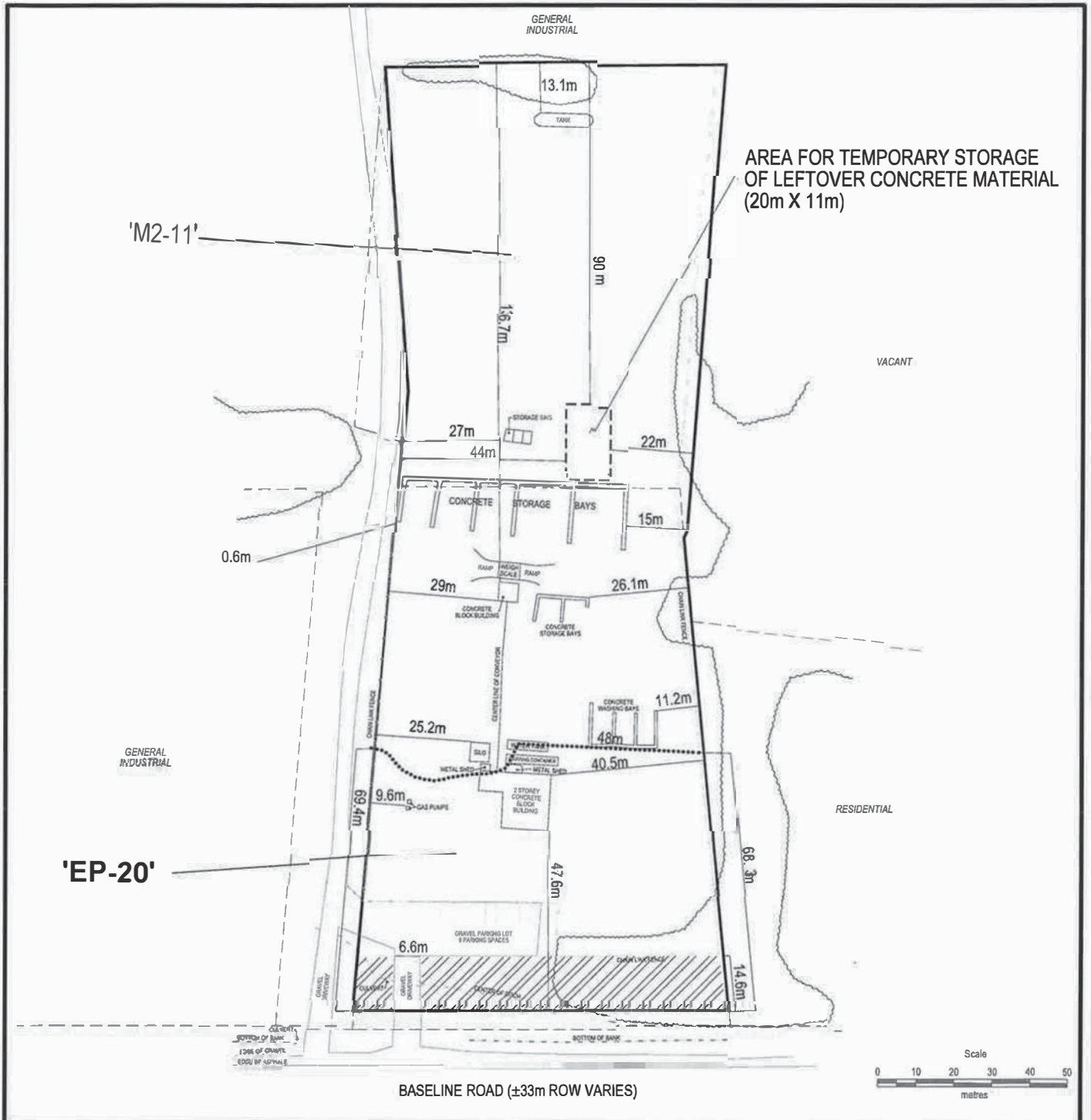


**SCHEDULE 'C-11'**



**SCHEDULE 'C-12'**

4440 BASELINE ROAD, PART OF LOT 15, CONCESSION 9  
 TOWN OF GEORGINA  
 REGIONAL MUNICIPALITY OF YORK  
 FORMERLY TOWNSHIP OF NORTH GWILLIMBURY  
 COUNTY OF YORK

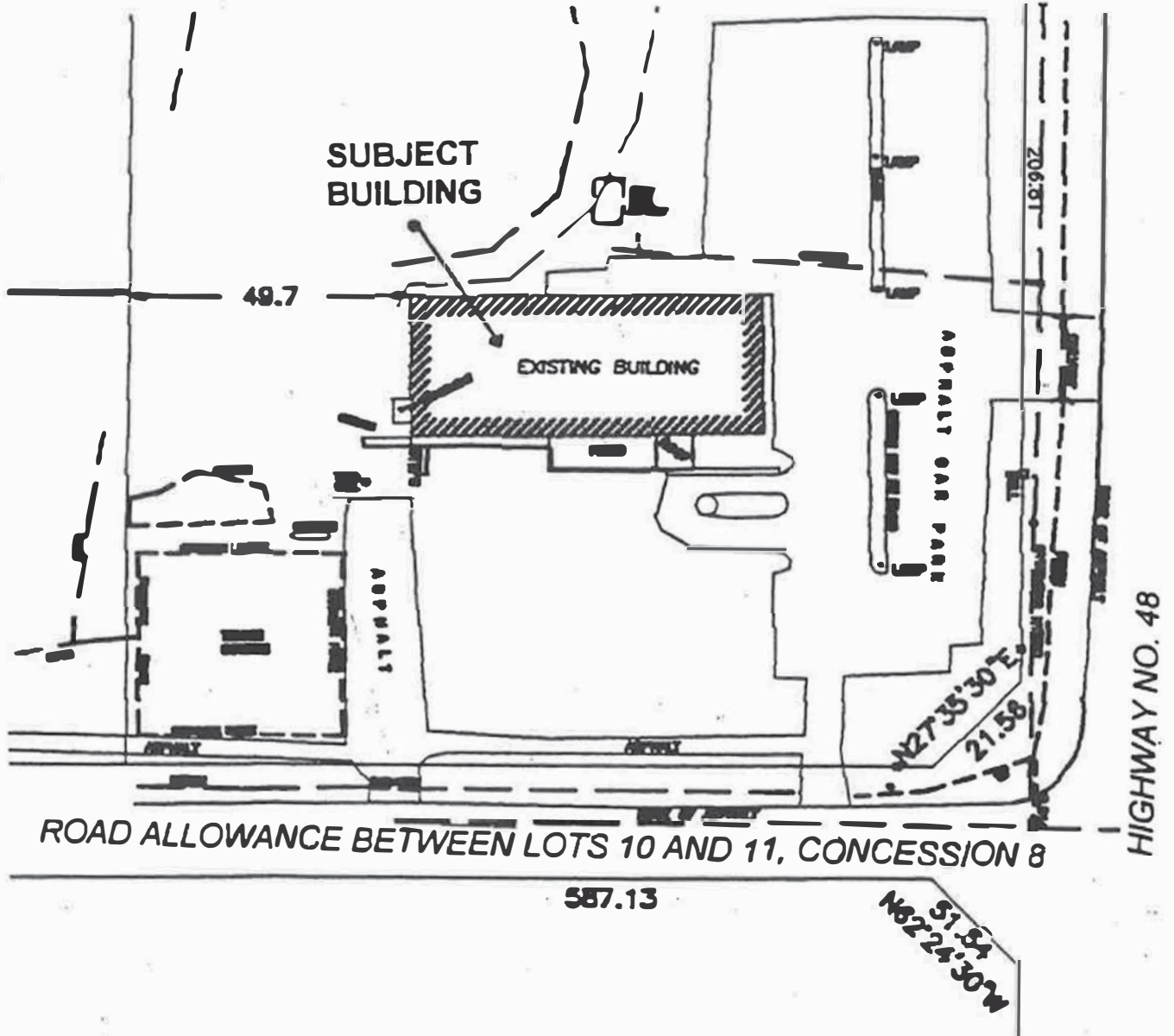


- Subject Property
- Existing Planting Strip (14.6m wide)

**SCHEDULE 'C-12'**

LOT 11, CONCESSION 8 (NG)  
TOWN OF GEORGINA  
THE REGIONAL MUNICIPALITY OF YORK

FORMERLY TOWNSHIP OF NORTH GWILLIMBURY  
COUNTY OF YORK



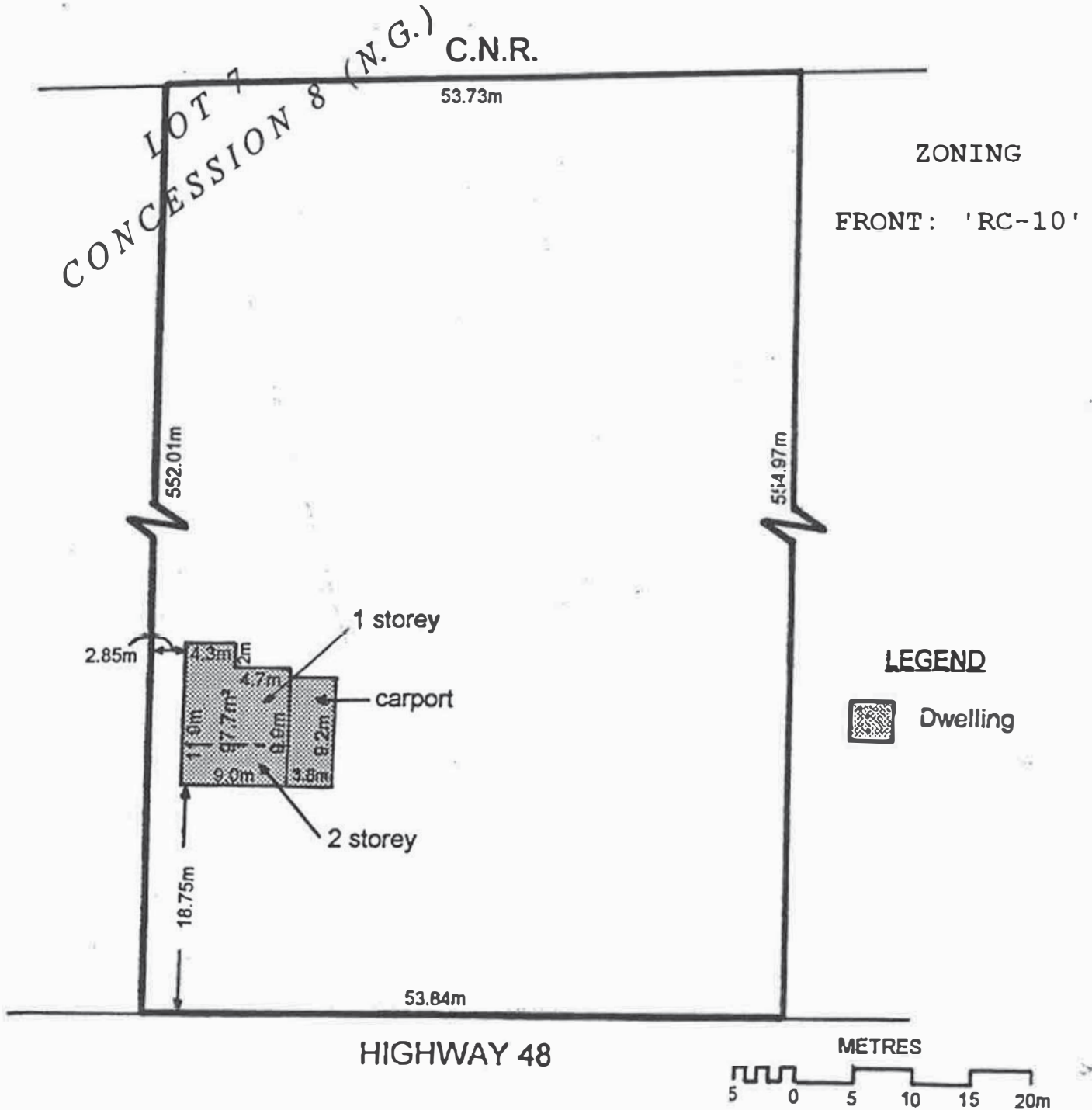
REDUCED PHOTOCOPY: NOT TO SCALE.

**SCHEDULE 'C-13'**

**ZONING  
CR-3**

PART OF LOT 7, CONCESSION 8 (N.G.)  
TOWN OF GEORGINA  
THE REGIONAL MUNICIPALITY OF YORK

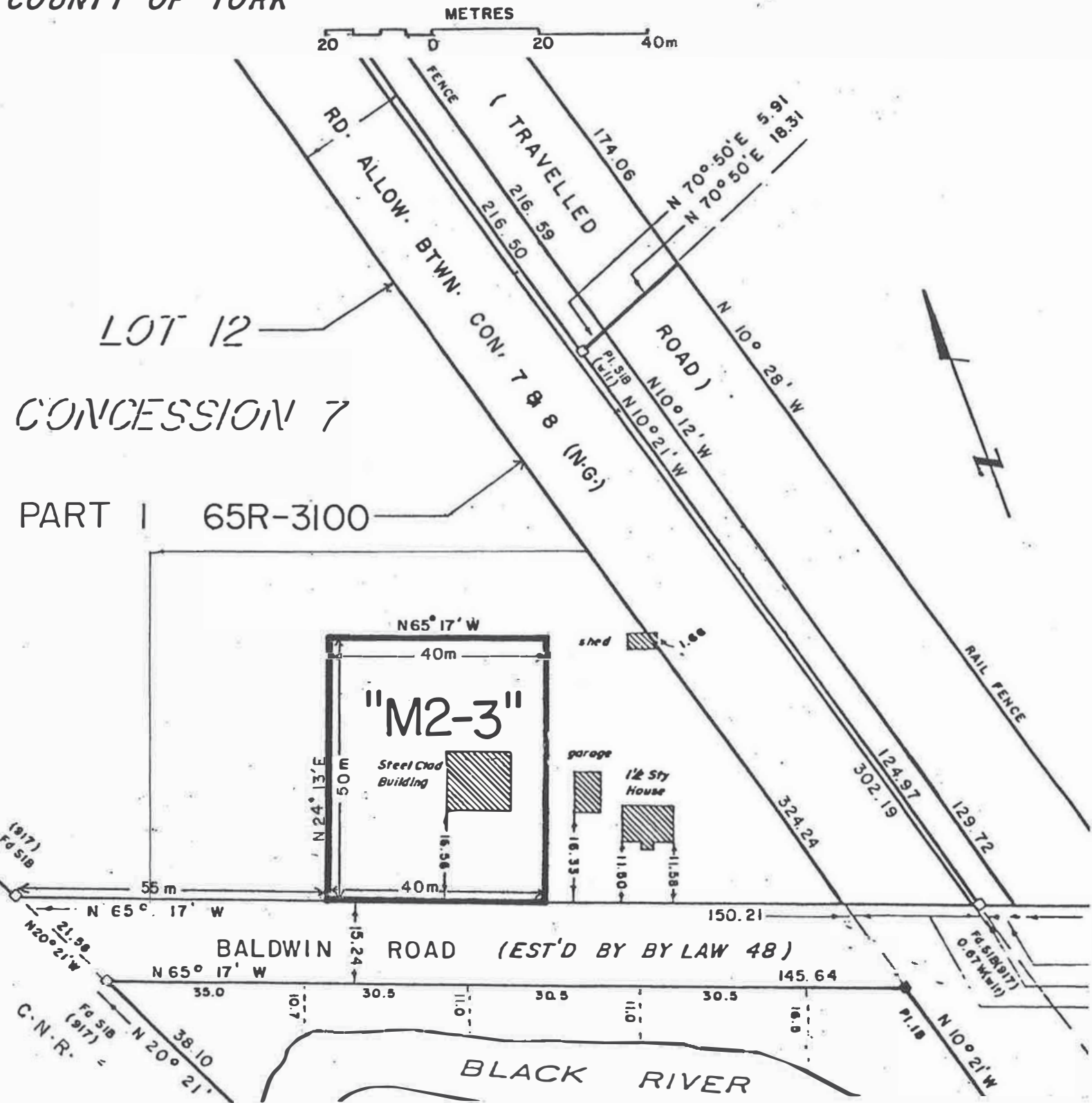
FORMERLY TOWNSHIP OF NORTH GWILLIMBURY  
COUNTY OF YORK



SCHEDULE 'C-14'

PART OF LOT 12 CONCESSION 7  
 TOWN OF GEORGINA  
 THE REGIONAL MUNICIPALITY OF YORK

FORMERLY TOWNSHIP OF NORTH GWILLIMBURY  
 COUNTY OF YORK

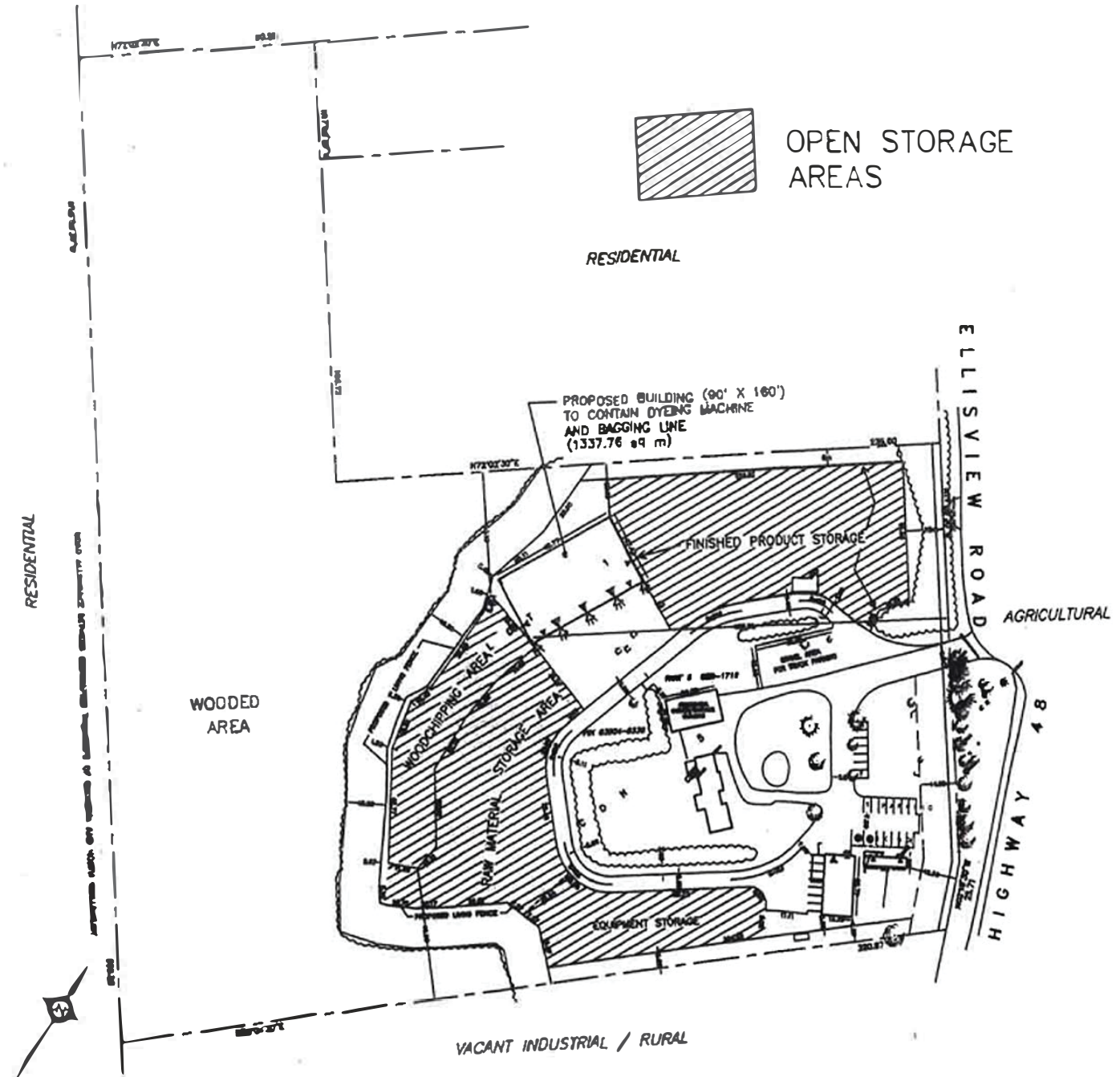


SCHEDULE 'C-15'



PART OF LOT 1, CONCESSION 5 (G)  
TOWN OF GEORGINA  
THE REGIONAL MUNICIPALITY OF YORK

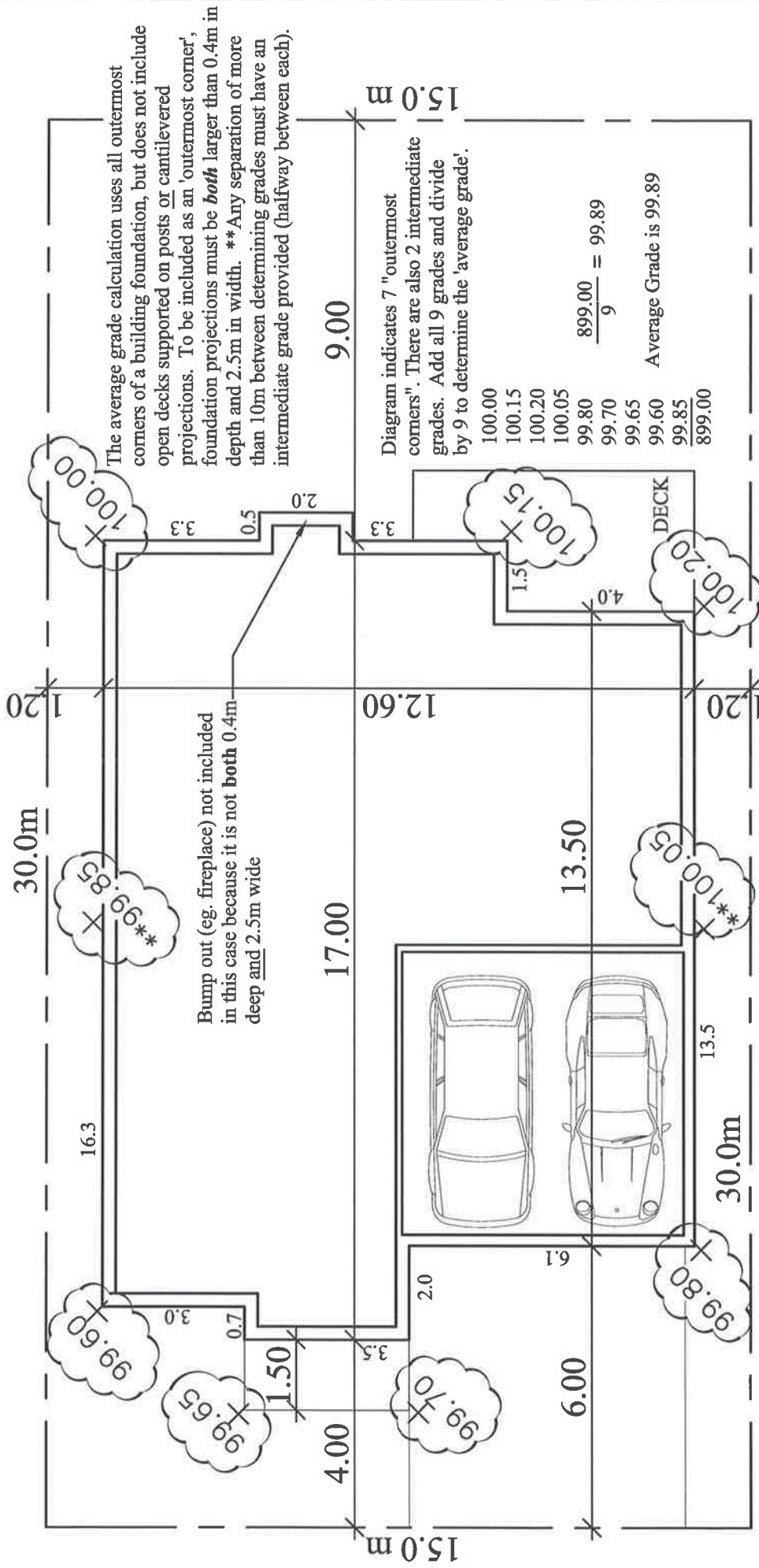
FORMERLY TOWNSHIP OF GEORGINA  
COUNTY OF YORK



**SCHEDULE 'C-16'**



# Illustration of Average Finished Grade



SCHEDULE 'C-17'