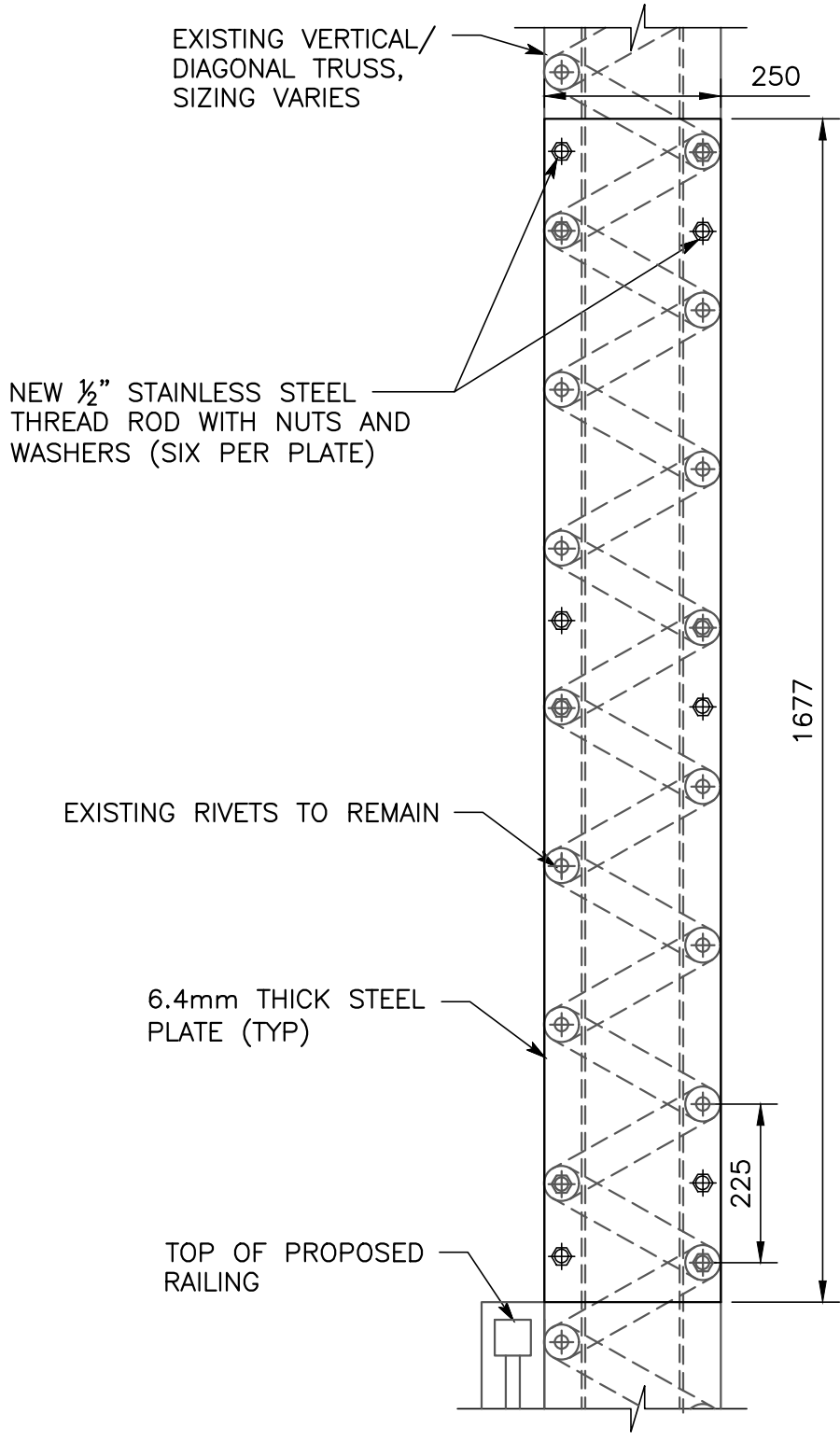


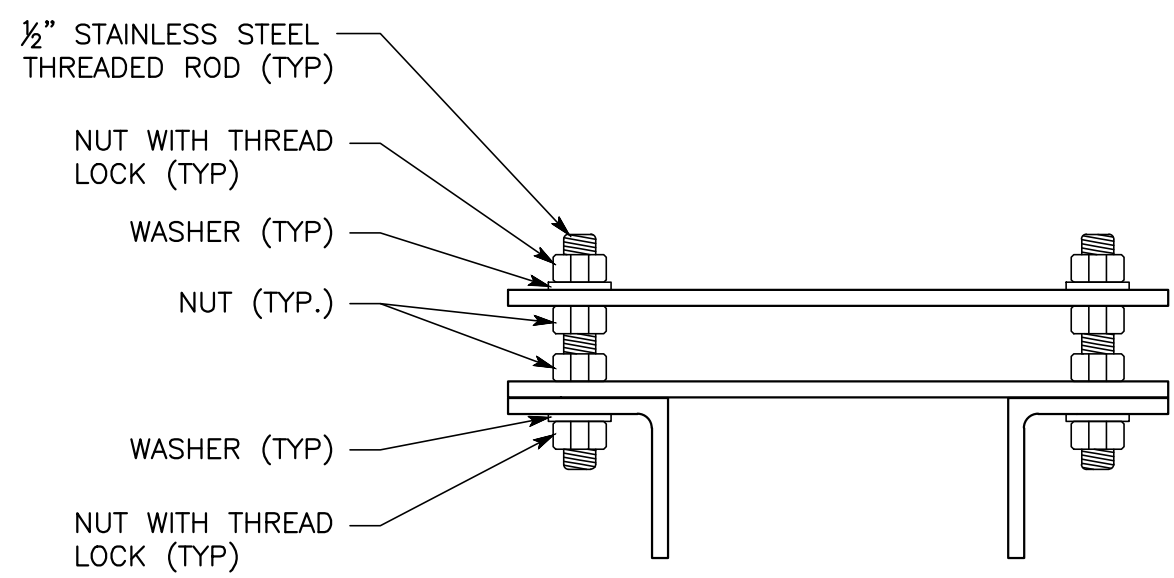
SOUTH ELEVATION – MEMBERS FOR MODIFICATION (TYP BOTH SIDES)

1:40

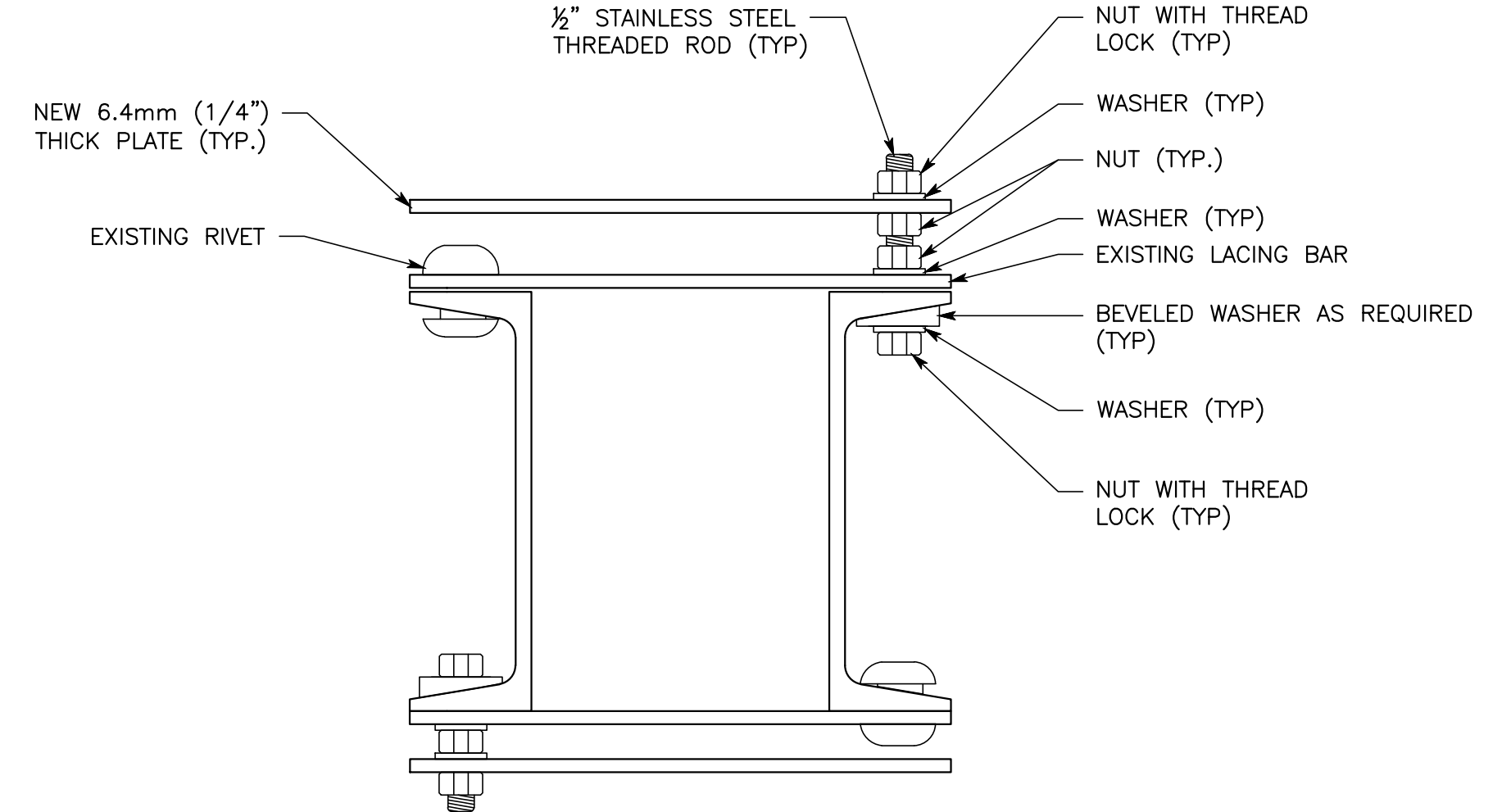
*LENGTH OF PLATE TO BE CONFIRMED DURING DETAILED DESIGN



PLATING PLAN 1:10



DIAGONAL MEMBER 1:3



VERTICAL MEMBER 1:3

GENERAL NOTES

1. ALL STEEL PLATES SHALL BE 300W AND MEET CSA G.40.21 (OR APPROVED EQUIVALENT).
2. BOLTS SHALL BE M20 (3/4") ASTM F3125 GRADE SP A325 AND BE GALVANIZED.
3. CLEAN ALL PLATES TO NEAR WHITE METAL AS PER SSPC-SP10/NACE NO.2.
4. COAT STEEL WITH THREE COAT SYSTEM AS PER OPSS 911. TOP COAT TO BE BLUE TO MATCH EXISTING COATING COLOUR.
5. FIELD TOUCH UP ALL DAMAGED COATING IN THE FIELD, INCLUDING THE EXPOSED ENDS OF THE GALVANIZED BOLTS. COAT GALVANIZED SURFACES FOLLOWING PROCEDURES FROM THE COATING MANUFACTURER.
6. FIELD MEASURE EXISTING MEMBERS PRIOR TO PREPARING SHOP DRAWINGS FOR SUBMISSION AND PRIOR TO FABRICATION.
7. RIVETS ARE TO BE REMOVED BY MECHANICAL MEANS AND NOT BY FLAME CUTTING. RIVET HOLES SHALL BE REAMED TO ACCEPT THE NEW BOLTS (PLUS 2mm).

METRIC
ALL DIMENSIONS SHOWN HERE ARE IN MILLIMETRES UNLESS OTHERWISE NOTED

CAD FILE: X:\Projects\24-216 Mossington Bridge Retrofits\DDA CAD files\24-216-001_R1.dwg
 MODIFIED: 2024-12-05 1:22:17 PM
 PLOTTED: 2024-12-05 1:23:21 PM

APPROVALS:	
RELATED APPROVALS:	



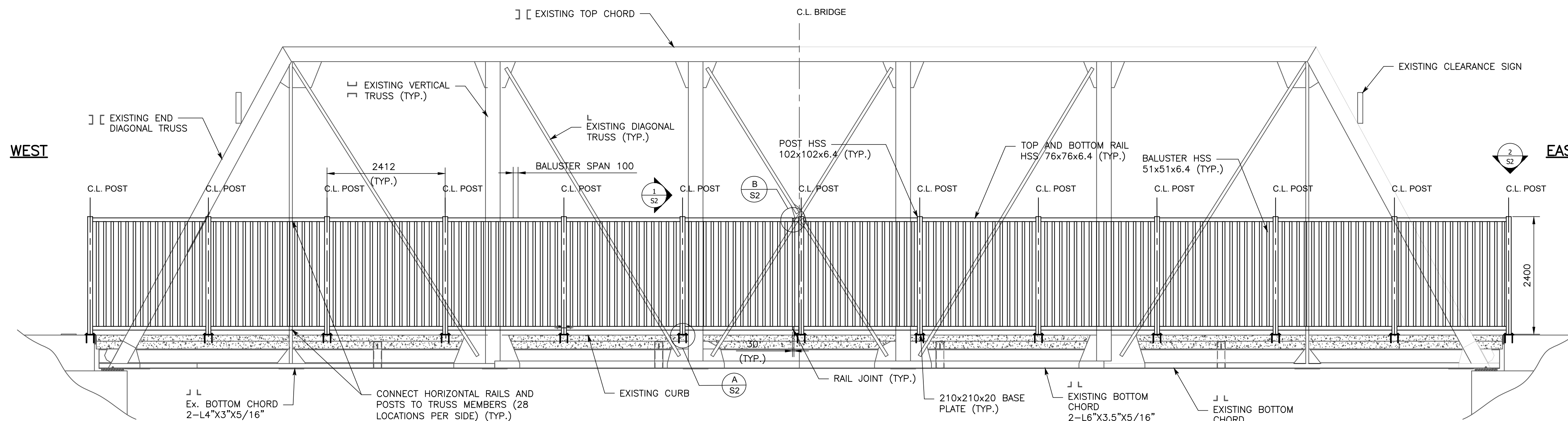
DESIGNED	AN		
DRAWN	AN		
CHECKED	DD		
APPROVED	DD		
AS - BUILT	DD	2024/12/04	DATE 2024/12/04
ISSUED FOR CONSTRUCTION	DD	2024/07/08	SCALE AS SHOWN
NO.	REVISIONS	BY	DATE

MOSSINGTON BRIDGE MODIFICATIONS	
LOCALIZED PLATE DETAILS TO DETER CLIMBING	

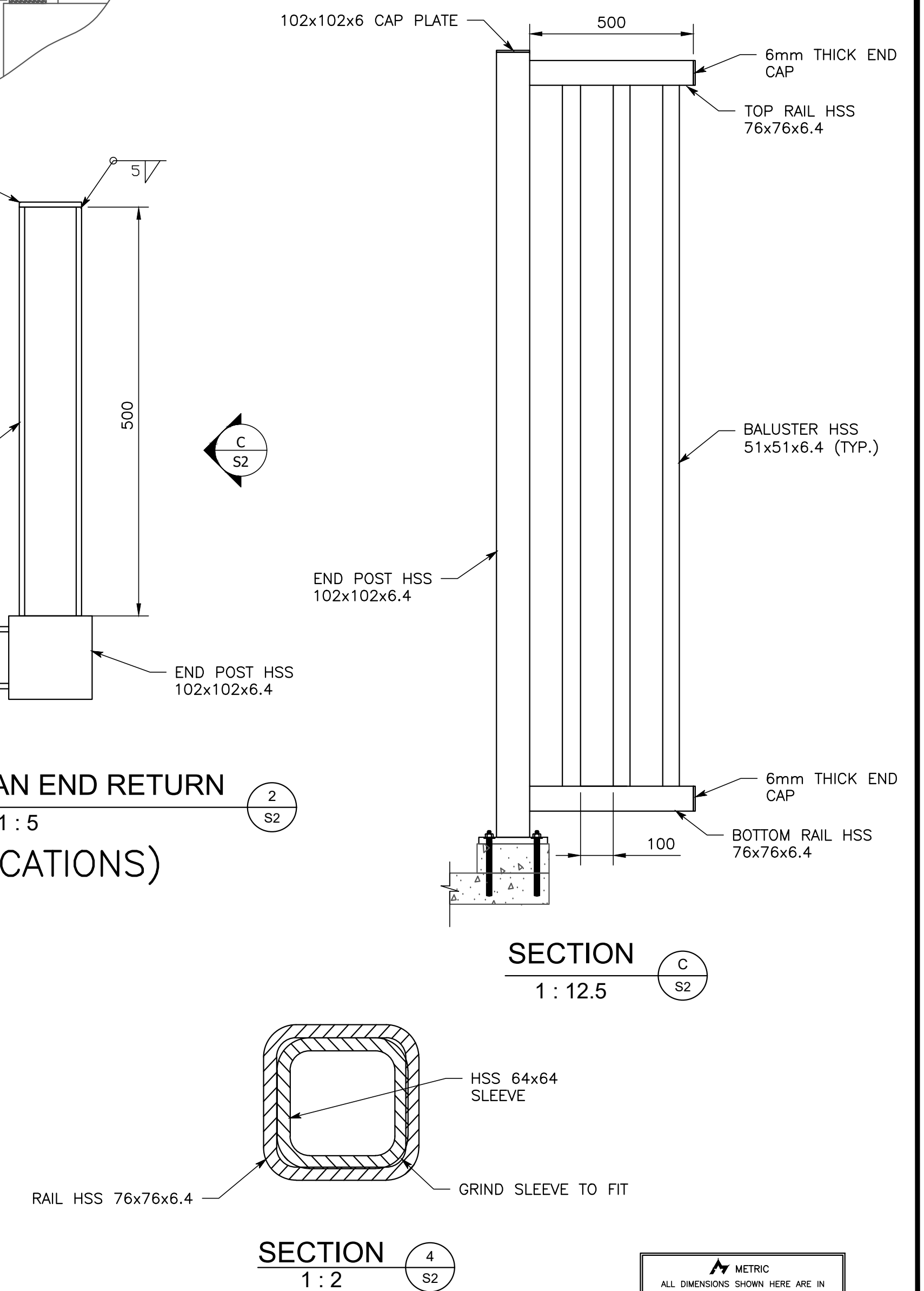
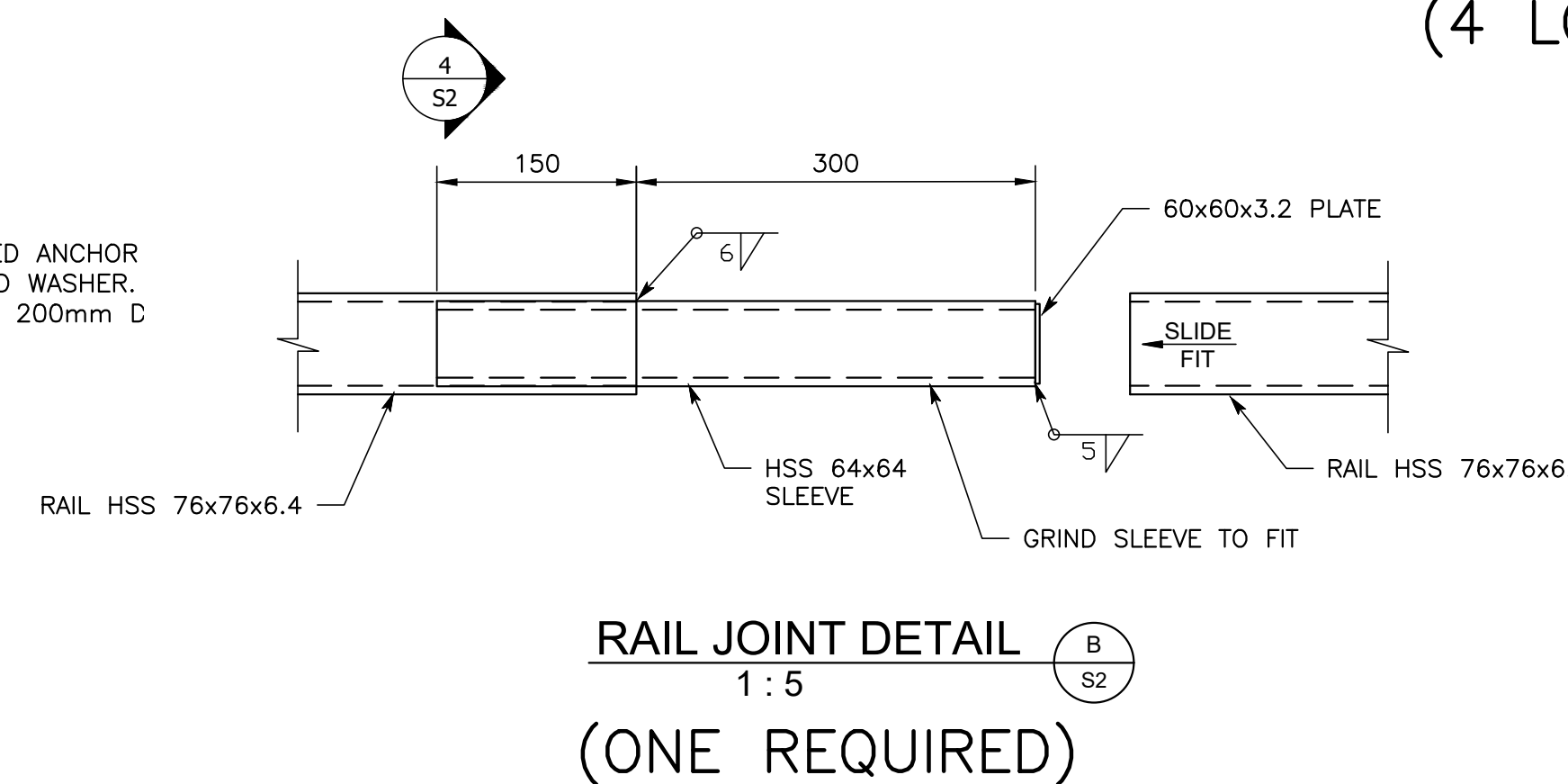
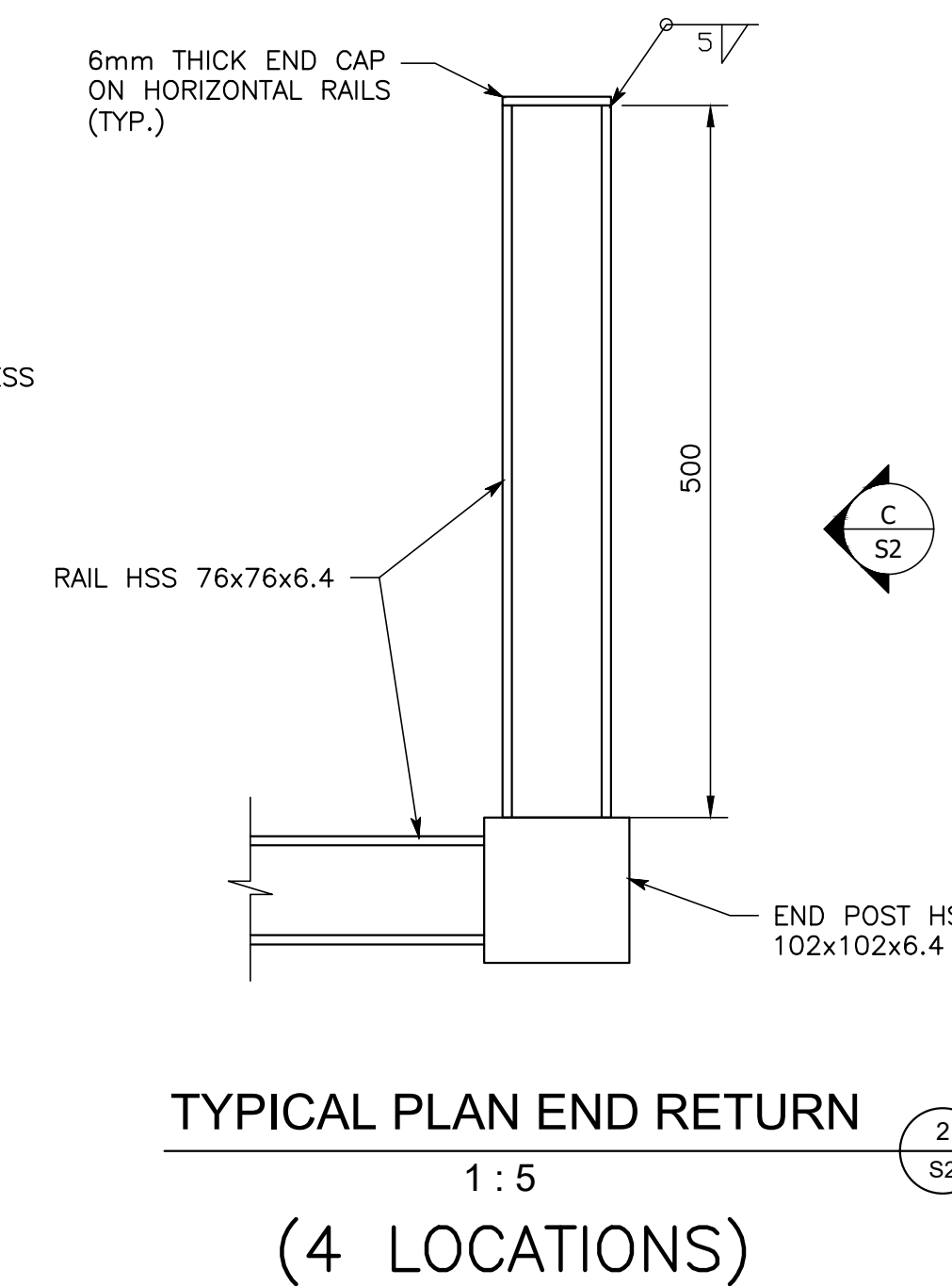
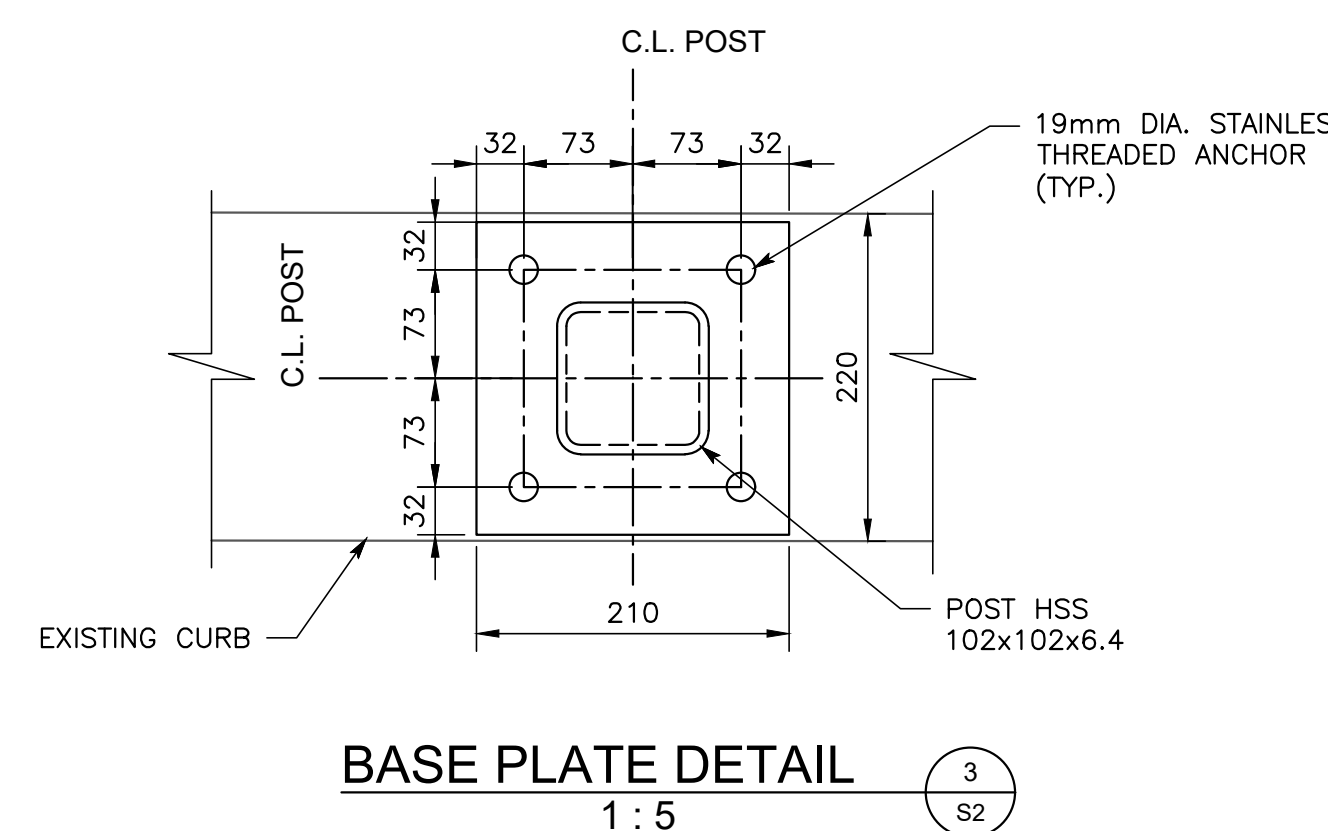
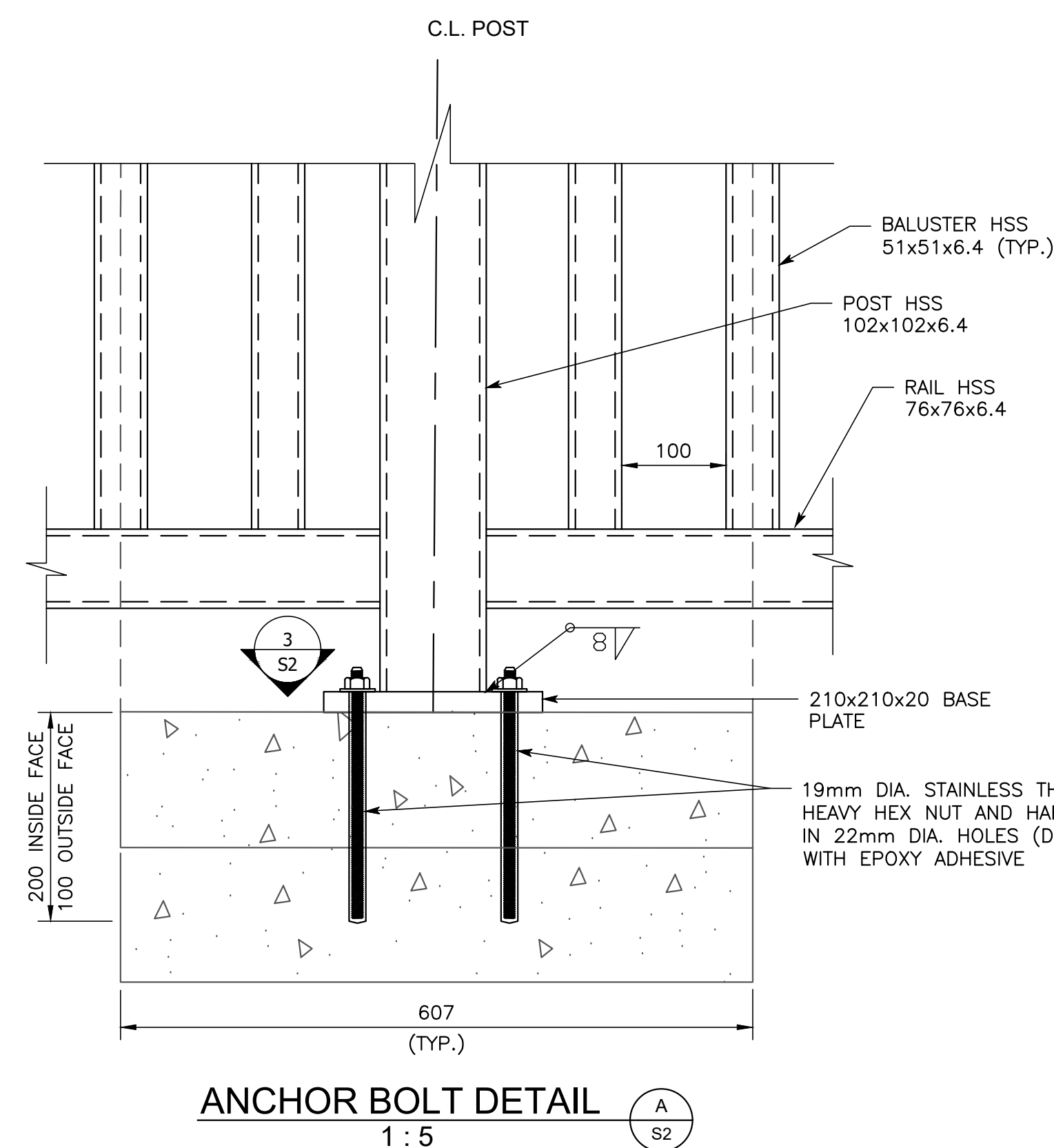
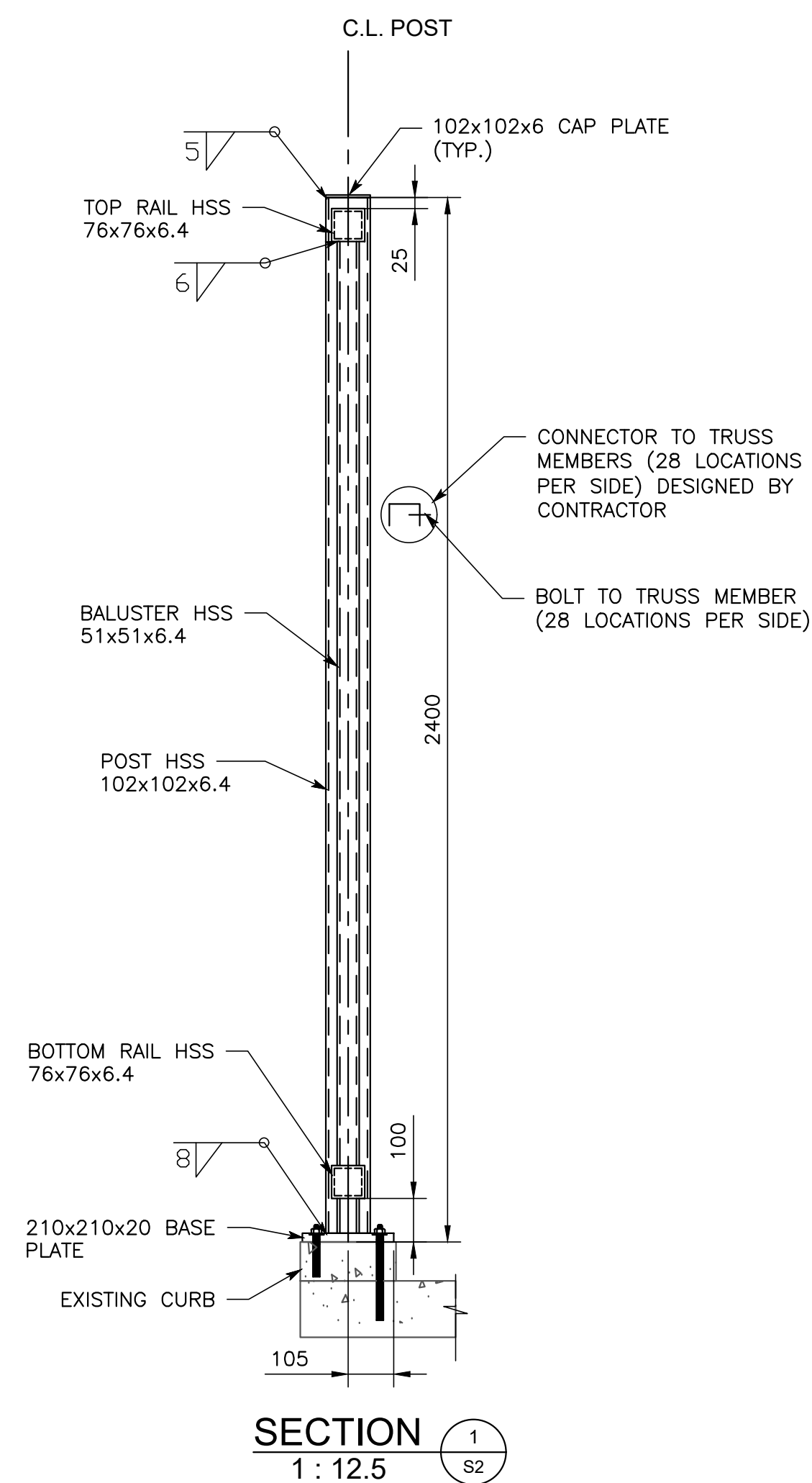
PROJECT NO.	24-216
SHEET NO.	1
OF 2 SHEETS	
CONTRACT NO.	T20-XXX

PEDESTRIAN BARRIER NOTES

- POSTS, RAILS, AND BALUSTERS SHALL BE HSS MEETING G40.20 CLASS C (OR AS APPROVED BY THE ENGINEER).
- FABRICATION SHALL BE IN COMPLIANCE WITH W59 AND THE FABRICATION PLANT SHALL BE DIVISION 1 OR 2.
- ALL WELDS SHALL BE SEAL WELDS.
- CONTRACTOR SHALL TAKE FIELD MEASUREMENTS AND PREPARE SHOP DRAWINGS FOR REVIEW BY THE ENGINEER.
- ALL DISCREPANCIES SHALL BE REPORTED TO THE ENGINEER WHEN FIELD MEASUREMENTS ARE BEING TAKEN.
- FOR GENERAL NOTES, SEE DRAWING 1.
- ALL COMPONENTS ARE TO BE SHOP COATED PRIOR TO INSTALLATION IN THE FIELD AS NOTED IN THE SPECIFICATIONS. FIELD TOUCH-UP ALL DAMAGED AREAS FOLLOWING INSTALLATION AND TIGHTENING OF THE ANCHORS.
- ANCHORS SHALL BE 19mm DIA. FULLY THREADED STAINLESS STEEL ROD TO ASTM 304 COMPLETE WITH STAINLESS STEEL NUTS AND WASHERS.
- COATING SHALL BE THREE (3) COAT EPOXY-ZINC/EPOXY/POLYURETHANE WITH THE TOP COAT MATCHING THE GLOSS AND COLOUR OF THE EXISTING COATING.
- AFTER FABRICATION (AND BEFORE COATING), ALL ROUGH EDGES SHALL BE GROUND SMOOTH SO AS TO NOT BE A RISK OF INJURY TO USERS.
- THE CONTRACTOR IS TO PROVIDE A BOLTED ATTACHMENT OF THE RAILING POST AND THE HORIZONTAL TOP AND BOTTOM RAIL TO EACH VERTICAL AND DIAGONAL TRUSS MEMBER (28 LOCATIONS ON EACH OF THE NORTH AND SOUTH BARRIER).



TYPICAL RAILING ELEVATION
(SOUTH SIDE RAILING SHOWN, NORTH SIDE SIMILAR)
1:50



METRIC
ALL DIMENSIONS SHOWN HERE ARE IN MILLIMETRES UNLESS OTHERWISE NOTED

CAD FILE: X:\Projects\24-216 Mossington Bridge Retrofits\DDA CAD files\24-216-001_R1.dwg
REVISED: 2024-12-05 1:22:17 PM rtrivedi
PLOTTED: 2024-12-05 1:23:55 PM Norm Trivedi

APPROVALS:

RELATED APPROVALS:



DESIGNED	AN	DATE	2024/12/05
DRAWN	AN	SCALE	AS SHOWN
CHECKED	DD		
APPROVED	DD		
AS - BUILT	DD	2024/12/04	
ISSUED FOR CONSTRUCTION	DD	2024/07/08	
NO.	REVISIONS	BY	DATE

MOSSINGTON BRIDGE MODIFICATIONS

PEDESTRIAN BARRIER

PROJECT NO.
24-216
SHEET NO.
2
OF 2 SHEETS
CONTRACT NO.
T20-XXX